

## Chapter : 2002 Ministry of Energy and Mineral Resources/Natural Resources Authority

Creation:	The Natural Resources Authority was established as per the temporary law of Natural Resources Affairs Regulation no. (37) for 1965, and in 1968 when the Natural Sources Affairs Regulation Law no. (12) for 1968 was issued, it became bearing the name of Natural Resources Authority.
Vision :	Best usage of mineral resources, in addition to developing and finding local substitute energy sources.
Mission:	Increasing sector's contribution to strengthening national economy, through increasing its contribution to GDP.

### Tasks of the Ministry / Department:

- \_ Issue the licenses of exploration, quarries and mining rights.
- \_ Increased contribution to mining sector in GDP through providing all necessary data to encourage investment.
- \_ Supervise petroleum and metals in the Kingdom and conclude international agreements related to petroleum and metals exploration.
- \_ Conduct geological, geophysical, geochemical and technical studies and surveys as well as economic studies of natural sources in the kingdom.
- \_ Set the necessary policies to develop and exploit mineral resources and energy sources.
- \_ Cooperate with multi-international institutions in the field of petroleum, mining and geological studies.
- \_ Set plans and programs to apply legislations related to different fields of natural resources in Jordan.

### Ministry/Department Contribution to the National Objectives:

- \_ Increase investment opportunities in the field of natural sources through providing suitable investment environment.
- \_ Contribute to increasing GDP.
- \_ Contribute to developing the local society through encourage investment in natural resources in different areas of the Kingdom.
- \_ Bring modern technologies in the field of exploiting natural resources in Jordan.

### Major Issues and Challenges which face the Ministry / Department:

- \_ Non-availability of infrastructure to petroleum exploration( technical services).
- \_ The techniques of oil rocks exploitation are still in development phase and need years to prove technical and economic feasibility.
- \_ Increased prices of lands rents which reflected negatively on mining sector.
- \_ Lack of local sources of commercial energy.
- \_ Lack to precious metal ores and industrial rocks.
- \_ No new petroleum explorations.
- \_ Lack of local expertise in the field of minerals qualification.
- \_ Increased financial cost for petroleum exploration and decreased oil prices will minimize the investments of small and medium size companies in petroleum exploration.

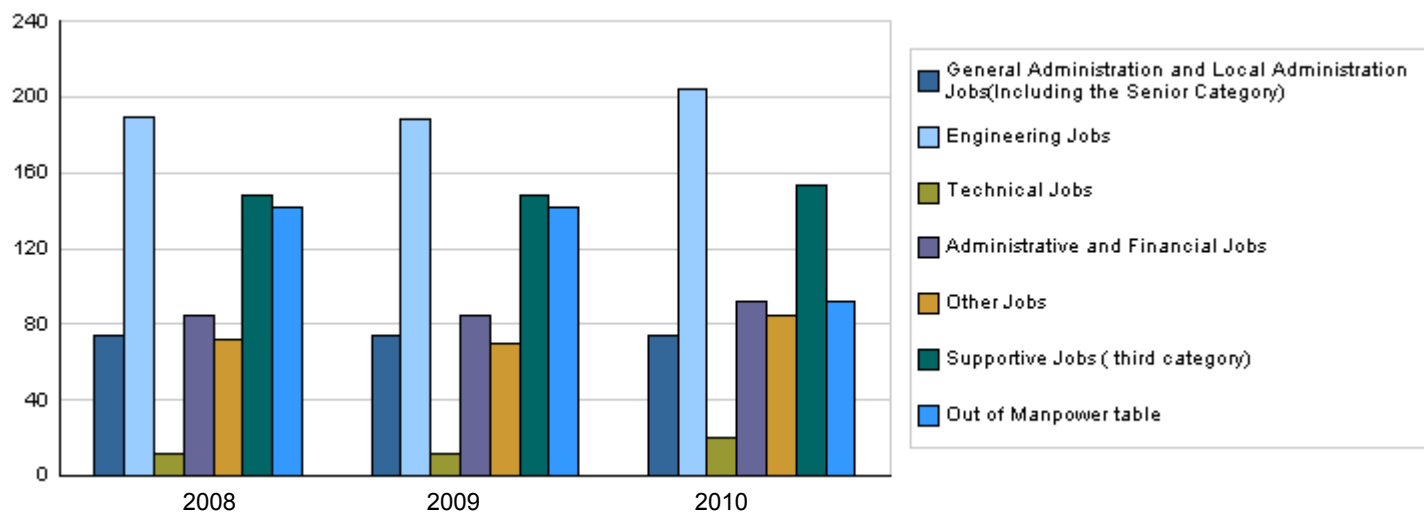
# Chapter : 2002 Ministry of Energy and Mineral Resources/Natural Resources Authority

## Strategic Objectives and Performance Indicators of the Ministry / Department

Strategic Objective	Performance Indicator	base year	Value	Actual Value	Target Value	Primary Self Evaluation	Target Value		
				2008	2009		2010	2011	2012
1 - Organizing, developing and managing the activities of Natural Resources Authority, and updating the legislations in order to increase investments in Mining and Petroleum Sector	1 Contribution of mining sector in the GDP.	2006	10.8%	10.5%	11%	11%	11%	12%	12%
2 - Conducting geological studies and surveys (geological, geophysical, geochemical, and exploration) in order to build a database that contributes to encouraging investment	1 Percentage of achieved geological studies.	2007	70%	75%	80%	75%	80%	85%	90%

## Number of Staff of the Ministry / Department

Group	Job	Actual 2008	Primary 2009	Estimated 2010
General Administration and Local Administration J	Supervisory and leading jobs	74	74	74
Engineering Jobs	Engineer	52	52	57
	Associate technician	4	2	7
	Miscellaneous (measurement, survey,...)	133	134	140
Technical Jobs	(programmer, systems analyst,...)	12	12	20
Administrative and Financial Jobs	Administrative and financial jobs	85	85	92
Other Jobs	(Geological, geophysical)	72	70	85
Supportive Jobs ( third category)	Supportive employee( driver, messenger,...)	148	148	153
Total		580	577	628
Out of Manpower table	Professionals, craftsmen	142	142	92
Overall Total		722	719	720
Number of male staff		657	648	641
Number of female staff		65	71	79



## Key Information of the Ministry / Department

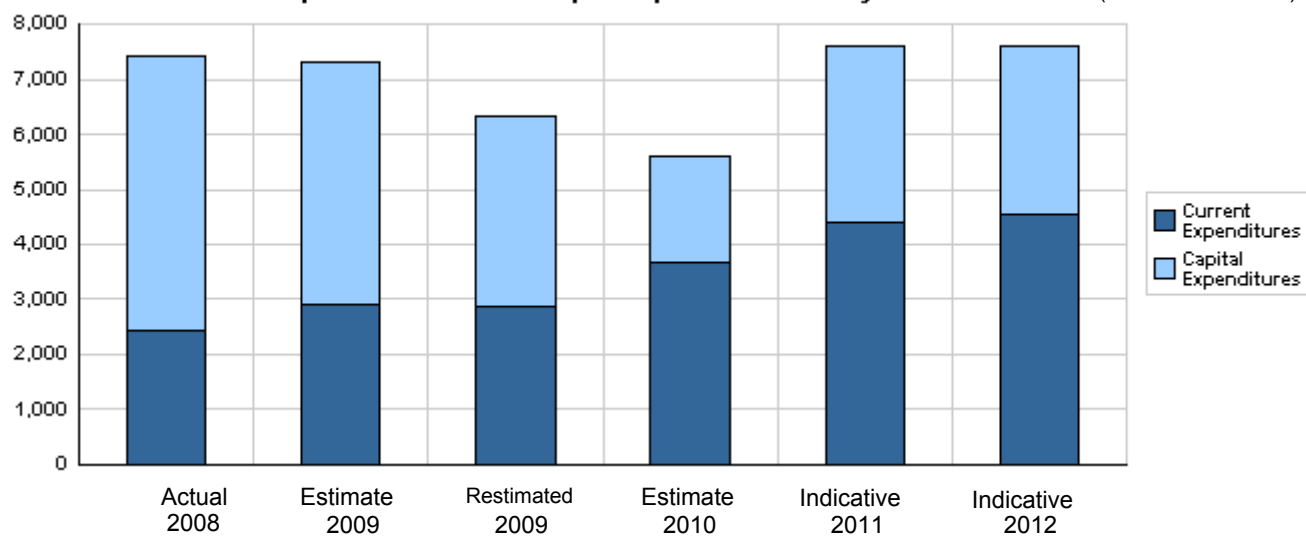
No.	Description	2006	2007	2008	2009	2010
1	Different revenues ( mining fees, quarrying licensing, fines, ...) in thousand JDs.	900	1700	1300	1700	1500
2	Number of licensed quarrying in Jordan.	263	263	254	275	300
3	Number of achieved geological maps.	5	5	2	6	11
4	Number of seismological stations.	20	20	26	53	53
5	Number of signed agreements participating in production.	1	2	6	6	7

**Overall Summary of Expenditures for Chapter 2002- Ministry of Energy and Mineral  
Resources/Natural Resources Authority  
for the years 2008 - 2012**

( JDs )

Description		Actual 2008	Estimate 2009	Re_Estimate 2009	Estimate 2010	Indicative 2011                      2012	
Group	Current Expenditures						
2111	Salaries, Wages and allowances	2,071,400	2,482,630	2,482,630	2,824,000	3,273,000	3,390,000
2121	Social Security Contributions	74,624	132,000	128,000	165,500	202,000	209,000
2211	Use of Goods and Services	261,426	267,000	239,370	669,500	896,000	929,000
2821	Other current expenses	16,925	24,000	20,000	18,000	20,000	20,000
Total current expenditures		2,424,375	2,905,630	2,870,000	3,677,000	4,391,000	4,548,000
Capital Expenditures							
2111	Salaries, Wages and allowances	1,322,223	899,500	755,500	134,000	145,000	152,000
2121	Social Security Contributions	87,718	60,000	38,000	13,000	16,000	17,000
2211	Use of Goods and Services	709,351	819,500	620,000	291,000	302,000	326,000
2822	Other Capital expenditures	1,090,057	1,169,000	955,000	865,000	2,085,000	1,995,000
3111	Buildings and Constructions	133,857	455,000	360,000	91,000	62,000	72,000
3112	Machinery and Equipment	1,160,429	653,500	453,000	285,000	338,000	178,000
3113	Other Fixed Assets	16,906	31,000	22,000	0	30,000	20,000
3122	Inventories	482,474	312,500	260,500	257,000	222,000	290,000
Total capital expenditures		5,003,015	4,400,000	3,464,000	1,936,000	3,200,000	3,050,000
Treasury		5,003,015	4,400,000	3,464,000	1,936,000	3,200,000	3,050,000
Total current and capital expenditures		7,427,390	7,305,630	6,334,000	5,613,000	7,591,000	7,598,000

**Graph of the current and capital expenditures for the years 2008 - 2012** ( Thousands of JDs )

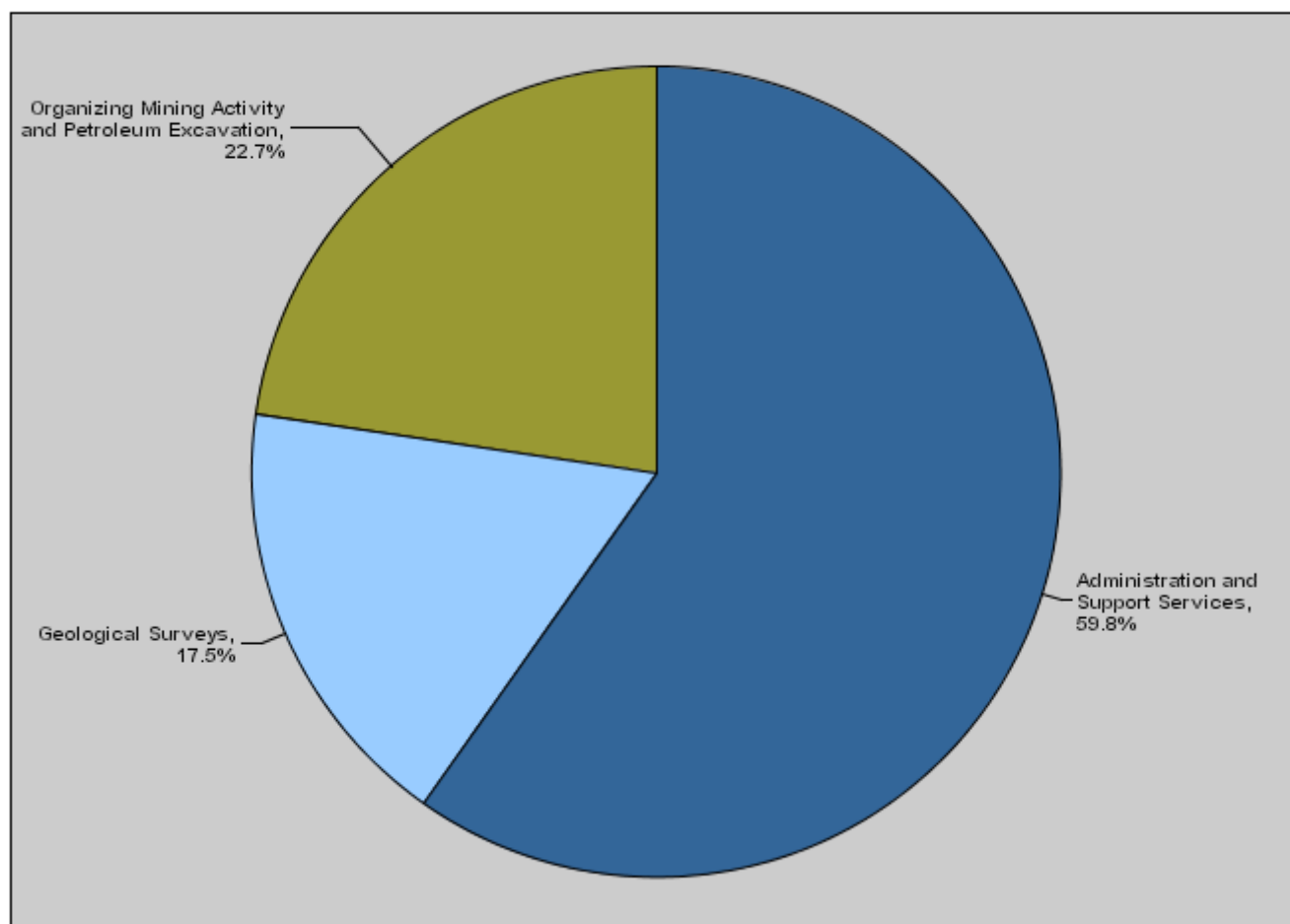


Budget of Chapter 2002 - Ministry of Energy and Mineral Resources/Natural Resources Authority  
For the Year 2010 Distributed According to Program

(In JD's )

Prog.	Description	Current Expenditures	Capital Expenditures	Total Expenditures
3601	Administration and Support Services	2,614,000	740,000	3,354,000
3605	Geological Surveys	651,000	332,000	983,000
3610	Organizing Mining Activity and Petroleum Excavation	412,000	864,000	1,276,000
Total		3,677,000	1,936,000	5,613,000

**Total Expenditures for the year 2010 Distributed According to Program**



Budget Chapter 2002 - Ministry of Energy and Mineral Resources/Natural Resources Authority Distributed  
According to the Program

3601	Administration and Support Services Program
------	---

Objective of the program :

Develop infrastructure, structure and the general performance of the Natural Resources Authority as well as to regulate, develop and manage the Authority's work and to update legislations.

The strategic objective related to the program :

Regulate, develop and manage the work of Natural Resources Authority and update the legislations to achieve the increase in investments in mining and petrol sector.

Directorates associated with the program :

- Administration.
- Financial affairs.
- Field services.
- Labs.
- Workshops.

Services provided by the program :

- To regulate and manage the administrative affairs in the Authority related to personnel's affairs, bureau, public relations, training and development.
- To regulate and manage the financial affairs in the Authority related to accounting, procurement, warehouses and any other financial matters.
- To regulate and manage the field services of the Authority related to field centers, transport, maintenance and public safety.
- To conduct lab tests required by the work nature in the Authority.
- Manage the work of the Authority's cars and vehicles through conducting the initial maintenance and required repairs.

Staff working in the program :

The program is implemented through a functional staff in 2009 estimated with ( 510 ) staff, including ( 471 ) males and ( 39 ) females .

Performance Measurement Indicators for program

Performance Measurement Indicator		Base Year	Value	Actual value	Target Value	First Self Evaluation	Target		
				2008	2009	2009	2010	2011	2012
1	Satisfaction degree of the authority's clients.	2006	-	75%	80%	75%	85%	90%	92%

Appropriations OF Administration and Support Services Program as Per Activities and Projects. ( In JDs )

Activities and Projects		Actual 2008	Estimate 2009	Re_Estimate 2009	Estimate 2010	Indicative 2011 2012	
Current Expenditures		1,501,115	1,919,030	1,883,400	2,614,000	3,229,500	3,338,500
2111	Salaries, Wages and allowances	1,179,875	1,536,030	1,536,030	1,811,500	2,165,500	2,237,500
2121	Social Security Contributions	42,889	92,000	88,000	115,000	148,000	152,000
2211	Use of Goods and Services	261,426	267,000	239,370	669,500	896,000	929,000
2821	Other current expenses	16,925	24,000	20,000	18,000	20,000	20,000
Capital Expenditures		2,786,977	1,801,500	1,541,000	740,000	720,000	762,000
001	Administration Project	2,211,877	1,734,500	1,474,000	740,000	720,000	762,000
003	Restructuring Natural Resources Au	575,100	67,000	67,000	0	0	0
Program / Treasury		2,786,977	1,801,500	1,541,000	740,000	720,000	762,000
Total Program		4,288,092	3,720,530	3,424,400	3,354,000	3,949,500	4,100,500

Budget Chapter 2002 - Ministry of Energy and Mineral Resources/Natural Resources Authority Distributed  
According to the Program

3605	Geological Surveys Program								
<u>Objective of the program :</u>									
Conduct the geological, geophysical, geochemical, earthquake and excavation surveys and studies to identify the mineral raw materkials involving in the industry and to prepare opportunities for the private sector for investment in the mineral raw materials as to encourage investment.									
<u>The strategic objective related to the program :</u>									
Conduct the geological surveys and studies ( geological, geophysical, geochemical and excavations) in order to build information technology which contributes to encouraging investment.									
<u>Directorates associated with the program :</u>									
<ul style="list-style-type: none"><li>- Geology.</li><li>- Projects and investment development.</li><li>- Information.</li></ul>									
<u>Services provided by the program :</u>									
<ul style="list-style-type: none"><li>- Prepare the geologicaal, geophysical and geochemical surveys and studies.</li><li>- Prepare and identify excavation studies.</li><li>- Provide the necessary information on the mineral raw materials for the private sector.</li><li>- Provide the necessary studies on petrol for the international petrol companies.</li><li>- Provide the technical information for all the Authority's directorates.</li><li>- Provide information services.</li></ul>									
<u>Staff working in the program :</u>									
The program is implemented through a functional staff in 2009 estimated with ( 146 ) staff, including ( 125 ) males and ( 21 ) females .									
Performance Measurement Indicators for program									
Performance Measurement Indicator		Base Year	Value	Actual value	Target Value	First Self Evaluation	Target		
				2008	2009	2009	2010	2011	2012
1	Number of accomplished geological maps.	2006	5	2	9	6	11	13	15
2	Number of earthquake observation stations.	2006	20	26	53	53	53	53	53
Appropriations OF Geological Surveys Program as Per Activities and Projects. ( In JDs									
Activities and Projects		Actual 2008	Estimate 2009	Re_Estimate 2009	Estimate 2010	Indicative 2011 2012			
Current Expenditures		606,321	630,700	630,700	651,000	693,000	716,000		
2111	Salaries, Wages and allowances	588,224	605,700	605,700	624,500	665,000	686,000		
2121	Social Security Contributions	18,097	25,000	25,000	26,500	28,000	30,000		
Capital Expenditures		1,528,593	1,390,000	911,000	332,000	400,000	295,000		
001	Geological Surveys Program Admini	797,643	675,000	414,000	282,000	335,000	225,000		
002	Updating earthquakes observation	590,000	350,000	252,000	0	0	0		
003	Excavation of Oil Shale Rock Projec	140,950	365,000	245,000	50,000	65,000	70,000		
Program / Treasury		1,528,593	1,390,000	911,000	332,000	400,000	295,000		
Total Program		2,134,914	2,020,700	1,541,700	983,000	1,093,000	1,011,000		

Budget Chapter 2002 - Ministry of Energy and Mineral Resources/Natural Resources Authority Distributed  
According to the Program

3610	Organizing Mining Activity and Petroleum Excavation Program
------	---

Objective of the program :

- Find an appropriate investment climate to protect and encourage investment in mining industries and to raise the value of mining returns to increase the national income.

The strategic objective related to the program :

Conduct the geological surveys and studies( geological, geophysical, geochemical and excavations) to build a database which contributes to encouraging investment.

Directorates associated with the program :

- Petrol directorate.
- Mining and quarries directorate.

Services provided by the program :

- Find alternative areas for investment in the field of mining industries.
- Issue excavation licenses.
- Issue quarries licenses.
- Issue export permissions.
- Prepare excavation agreements on petrol with the investment companies.
- Preserve the climate environment.

Staff working in the program :

The program is implemented through a functional staff in 2009 estimated with ( 63 ) staff, including ( 52 ) males and ( 11 ) females .

**Performance Measurement Indicators for program**

Performance Measurement Indicator		Base Year	Value	Actual value	Target Value	First Self Evaluation	Target		
				2008	2009	2009	2010	2011	2012
1	Number of signed production partnership agreements.	2006	1	6	6	6	7	7	8
2	Number of the licensed quarries in Jordan.	2006	263	254	285	275	300	325	350

**Appropriations OF Organizing Mining Activity and Petroleum Excavation Program as Per Activities and Projects. ( In JDs )**

Activities and Projects		Actual 2008	Estimate 2009	Re_Estimate 2009	Estimate 2010	Indicative 2011 2012	
Current Expenditures		316,939	355,900	355,900	412,000	468,500	493,500
2111	Salaries, Wages and allowances	303,301	340,900	340,900	388,000	442,500	466,500
2121	Social Security Contributions	13,638	15,000	15,000	24,000	26,000	27,000
Capital Expenditures		687,445	1,208,500	1,012,000	864,000	2,080,000	1,993,000
001	Organizing Mining Activity and Petro	214,923	208,500	146,000	64,000	80,000	93,000
002	Petroleum Excavation Through Mark	472,522	1,000,000	866,000	800,000	2,000,000	1,900,000
Program / Treasury		687,445	1,208,500	1,012,000	864,000	2,080,000	1,993,000
Total Program		1,004,384	1,564,400	1,367,900	1,276,000	2,548,500	2,486,500