

## Chapter : 1601 Ministry of Industry and Trade

- Creation:** The Ministry of Industry and Trade in 1952 was established under the name of Ministry of Economy and Trade and as per the Ministry of National Economy Administration Bylaw no. (12) for the year 1971 it became the Ministry of National Economy, in line with the international economic updates, and Jordan's orientation towards economic and trade openness and enhance the free economy mechanisms and market powers, the Industry and Trade Law no. (18) for the year 1998 was issued and as per this law the Ministry of Food was cancelled and its directorates were merged with the directorates of the Ministry of Industry and Trade as the legal successor of the Ministry of Food
- Vision :** A distinguished ministry that follows a pioneer and initiative role in developing national economy and reinforcing competitiveness, in order to achieve the national objectives, upgrade national economy to reach levels that are internationally distinctive, whereas its effects can reflect on citizens' living conditions.
- Mission:** Contributing in realizing sustainable economic development through efficient and effective management of Jordan's economic, commercial, regional, and multinational relations, in addition to developing and executing policies, legislations and programs aiming at reinforcing business and investment environment, which shall accordingly increase the economic attractiveness, and ensure the protection of rights and interests of consumers and the business sector.

### Tasks of the Ministry / Department:

- Supervise, regulate, classify, improve the national industry and increase its competitiveness in the field of industry.
- Supervise, regulate, and develop foreign and internal commerce and control markets to the interest of citizen and regulate the selling of basic materials, strategic stock materials, and establish warehouses and other facilities.
- Confine the establishment of private industrial cities with licensing from the Minister of Industry and Commerce according to the principles and conditions defined with a specific regulation.
- Grant the Ministry of Industry and Commerce the power to prepare draft economic and commerce agreements and protocols related to the Ministry's work and investment.
- Prepare and follow up the implementation of bilateral and multilateral economic agreements and conduct studies.
- Accept private and public, local and foreign institutions requests to hold commercial and industrial exhibitions in the Kingdom and regulate exhibitions of Jordanian products abroad.

### Ministry/Department Contribution to the Achievement of the National Objectives:

- Develop the national economy to be prosper and open to regional and international markets.
- Enhance the government management to be financially stable, transparent and accountable.
- Enable the national economy to accommodate the growing flow of Jordanian labor.

### Major Issues and Challenges which face the Ministry / Department:

- Keep in pace with the update and development of investment laws, regulations and legislations.
- Lack of qualified human resources and jobs leakage.
- The limited information sources and the absence of necessary database to conduct investigations and studies related to program implementation within the strategic plan.

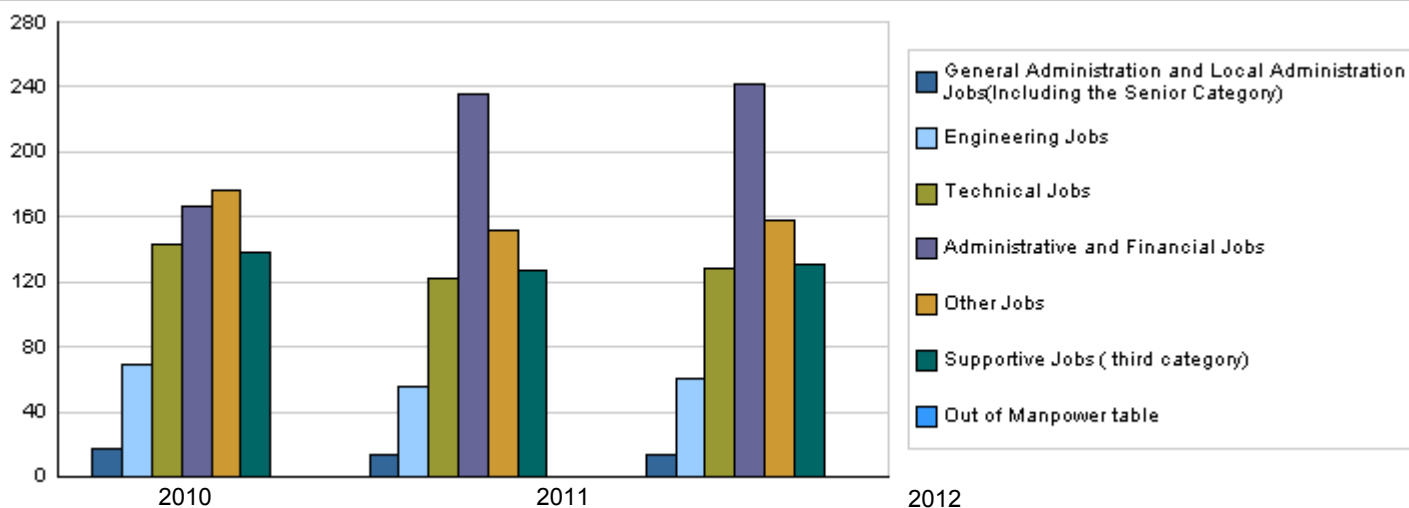
## CHAPTER : 1601 Ministry of Industry and Trade

### Strategic Objectives and Performance Indicators of the Ministry / Department

| Strategic Objective   | Performance Indicator   | base year | Value | Actual Value | Target Value | Primary Self Evaluation | Target Value |       |      |
|---|---|-----------|-------|--------------|--------------|-------------------------|--------------|-------|------|
|   |   |           |       | 2010         | 2011         |                         | 2011         | 2012  | 2013 |
| 1 - Maximizing the performance of both commercial and industrial sectors.                                   | 1 Percentage of industrial sector contribution in the GDP (base prices).            | 2006      | %25.7 | %25          | %25.5        | %25                     | %26          | %26.5 | %27  |
| 2 - Contributing to the reinforcement of an environment that encourages economic and investment activities. | 1 Growth average of local employment in the industrial sector.                      | 2005      | %7.2  | %5.5         | %5.5         | %5.5                    | %5.5         | %5.5  | %5.8 |
| 3 - Organizing and controlling domestic and foreign trade.  | 1 Number of complaints regarding the availability and quality of basic commodities. | 2006      | 300   | 256          | 230          | 230                     | 200          | 185   | 150  |
| 4 - Developing and activating legislations to protect the rights of consumers and business sector.          | 1 Number of complaints of stakeholders who deal with the local market.              | 2006      | 420   | 265          | 230          | 235                     | 210          | 185   | 160  |
| 5 - Making the Ministry's work more efficient and effective.  | 1 Satisfaction degree of the Ministry's clients.                                    | 2006      | %85   | %89          | %91          | %90                     | %92          | %93   | %95  |

### Number of Staff of the Ministry / Department

| Group                                   | Job                            | Actual 2010    |                |                | Primary 2011   |                |                | Estimated 2012 |                |                |
|---|--------------------------------|----------------|----------------|----------------|----------------|----------------|----------------|----------------|----------------|----------------|
|   |                                | Male           | Female         | Total          | Male           | Female         | Total          | Male           | Female         | Total          |
| General Administration and Local Admini | Supervisory and Leadership jo  | 13             | 4              | 17             | 12             | 1              | 13             | 12             | 1              | 13             |
| Engineering Jobs                        | Several engineering jobs       | 51             | 18             | 69             | 37             | 18             | 55             | 40             | 20             | 60             |
| Technical Jobs                          | Other technical jobs           | 94             | 49             | 143            | 73             | 49             | 122            | 78             | 50             | 128            |
| Administrative and Financial Jobs       | Several administrative and fin | 84             | 82             | 166            | 153            | 83             | 236            | 157            | 85             | 242            |
| Other Jobs                              | Other several jobs             | 123            | 54             | 177            | 107            | 45             | 152            | 110            | 48             | 158            |
| Supportive Jobs ( third category)       | Several supportive jobs        | 110            | 28             | 138            | 96             | 31             | 127            | 99             | 32             | 131            |
| <b>Total</b>                            |                                | <b>475</b>     | <b>235</b>     | <b>710</b>     | <b>478</b>     | <b>227</b>     | <b>705</b>     | <b>496</b>     | <b>236</b>     | <b>732</b>     |
| Out of Manpower table                   | Out of manpower table          | 0              | 0              | 0              | 0              | 0              | 0              | 0              | 0              | 0              |
| <b>Grand Total</b>                      |                                | <b>475</b>     | <b>235</b>     | <b>710</b>     | <b>478</b>     | <b>227</b>     | <b>705</b>     | <b>496</b>     | <b>236</b>     | <b>732</b>     |
| <b>Total Cost of Salaries</b>           |                                | <b>2754887</b> | <b>1356886</b> | <b>4111773</b> | <b>3011540</b> | <b>1430260</b> | <b>4441800</b> | <b>3137972</b> | <b>1461028</b> | <b>4599000</b> |



### Key Information of the Ministry / Department

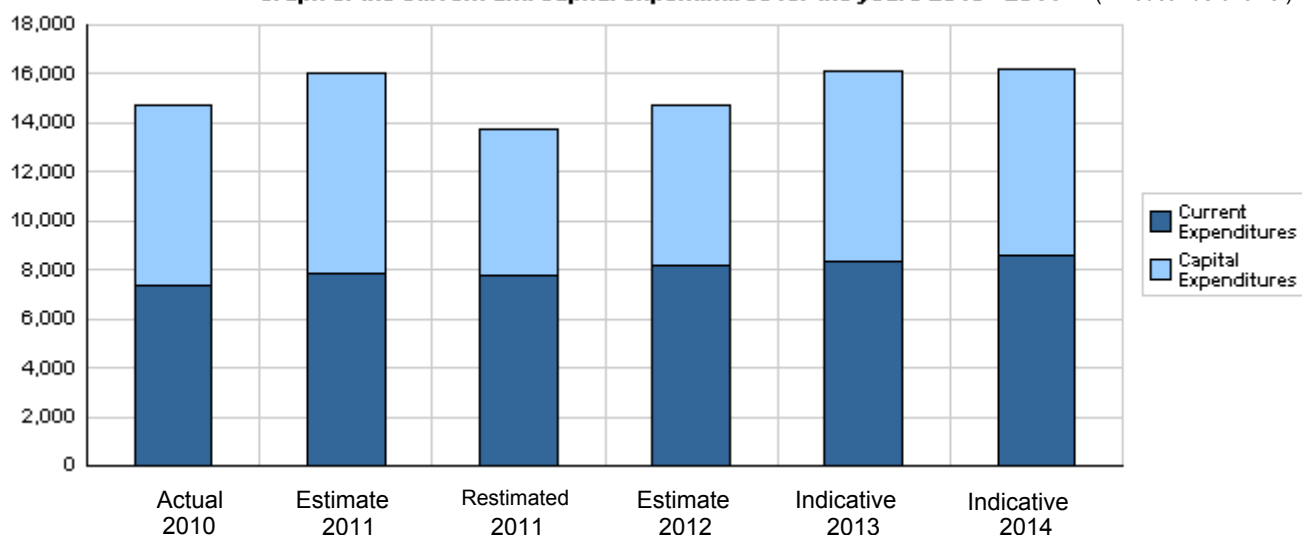
| No. | Description   |
|-----|---|
| 1   | Issue the origin certificate issuance procedures manual and circulate on concerned entities.          |
| 2   | Finishing the preparation of final draft of national strategy documents of international commerce.    |
| 3   | Signing free commerce agreements among a number of countries.   |
| 4   | Start the application of tradenames and individual institutions registration services electronically. |
| 5   | Prepare draft national industrial policy and discuss its dimensions with related authorities.         |
| 6   | Finishing the Jordanian European twinning project of the Ministry of Industry.                        |

**Overall Summary of Expenditures for Chapter 1601- Ministry of Industry and Trade**  
for the years 2010 - 2014

( In JDs )

| Description                                   |  | Actual<br>2010              | Estimate<br>2011  | Re_Estimate<br>2011 | Estimate<br>2012  | Indicative        |                   |  |
|---|--|-----------------------------|-------------------|---------------------|-------------------|-------------------|-------------------|--|
|   |  |                             |                   |                     |                   | 2013              | 2014              |  |
| <b>Group</b>                                  | <b>Current Expenditures</b>                |                             |                   |                     |                   |                   |                   |  |
| 2111  | Salaries, Wages and allowances             | 3,844,795                   | 4,143,600         | 4,143,600           | 4,290,000         | 4,294,000         | 4,421,000         |  |
| 2121  | Social Security Contributions              | 266,978                     | 322,400           | 298,200             | 309,000           | 322,000           | 332,000           |  |
| 2211  | Use of Goods and Services                  | 579,814                     | 635,000           | 635,000             | 613,000           | 643,000           | 666,000           |  |
| 2631  | Subsidy to public gov. units               | 2,602,966                   | 2,670,000         | 2,670,000           | 2,920,000         | 3,000,000         | 3,100,000         |  |
| 2821  | Other current expenses                     | 30,459                      | 55,000            | 55,000              | 45,000            | 55,000            | 55,000            |  |
| <b>Total current expenditures</b>             |  | <b>7,325,012</b>            | <b>7,826,000</b>  | <b>7,801,800</b>    | <b>8,177,000</b>  | <b>8,314,000</b>  | <b>8,574,000</b>  |  |
|   |  | <b>Capital Expenditures</b> |                   |                     |                   |                   |                   |  |
| 2111  | Salaries, Wages and allowances             | 0                           | 20,000            | 20,000              | 45,000            | 55,000            | 55,000            |  |
| 2211  | Use of Goods and Services                  | 573,926                     | 4,023,600         | 1,836,000           | 2,128,000         | 3,039,000         | 2,907,000         |  |
| 2632  | Subsidy to other public gov. units/capital | 6,800,000                   | 3,890,000         | 3,890,000           | 4,091,700         | 4,396,700         | 4,446,700         |  |
| 2822  | Other Capital expenditures                 | 0                           | 65,000            | 37,000              | 153,000           | 190,000           | 160,000           |  |
| 3111  | Buildings and Constructions                | 0                           | 0                 | 0                   | 0                 | 0                 | 0                 |  |
| 3112  | Machinery and Equipment                    | 3,572                       | 195,000           | 130,000             | 123,300           | 106,300           | 71,300            |  |
| 3113  | Other Fixed Assets                         | 0                           | 0                 | 0                   | 0                 | 0                 | 0                 |  |
| <b>Total capital expenditures</b>             |  | <b>7,377,498</b>            | <b>8,193,600</b>  | <b>5,913,000</b>    | <b>6,541,000</b>  | <b>7,787,000</b>  | <b>7,640,000</b>  |  |
| <b>Treasury</b>                               |  | <b>7,377,498</b>            | <b>8,193,600</b>  | <b>5,913,000</b>    | <b>6,541,000</b>  | <b>7,787,000</b>  | <b>7,640,000</b>  |  |
| <b>Total current and capital expenditures</b> |  | <b>14,702,510</b>           | <b>16,019,600</b> | <b>13,714,800</b>   | <b>14,718,000</b> | <b>16,101,000</b> | <b>16,214,000</b> |  |

**Graph of the current and capital expenditures for the years 2010 - 2014** ( Thousands of JDs )

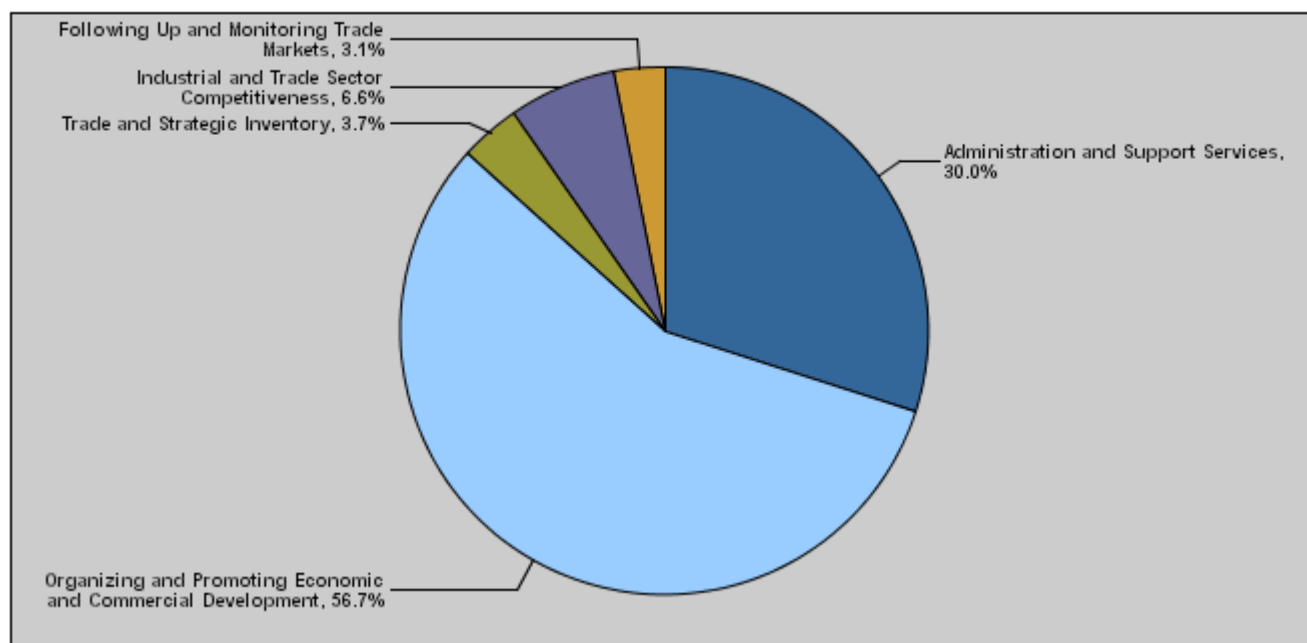


**Budget of Chapter 1601 - Ministry of Industry and Trade  
For the Year 2012 Distributed According to Program**

( InJDs )

| Prog. | Description  | Current Expenditures | Capital Expenditure | Total Expenditure |
|-------|--|----------------------|---------------------|-------------------|
| 2801  | Administration and Support Services                          | 2,935,500            | 1,476,000           | 4,411,500         |
| 2805  | Organizing and Promoting Economic and Commercial Development | 3,521,900            | 4,820,000           | 8,341,900         |
| 2810  | Trade and Strategic Inventory                                | 455,800              | 85,000              | 540,800           |
| 2815  | Industrial and Trade Sector Competitiveness                  | 849,300              | 120,000             | 969,300           |
| 2820  | Following Up and Monitoring Trade Markets                    | 414,500              | 40,000              | 454,500           |
|       | <b>Total</b>   | <b>8,177,000</b>     | <b>6,541,000</b>    | <b>14,718,000</b> |

**Total Expenditures for the Year 2012 Distributed According to Program**



**Estimated Allocations For Females distributed according to Programs for the Years 2010 - 2014**

| Program   | 2010           | 2011           | 2012           | 2013           | 2014           |
|---|----------------|----------------|----------------|----------------|----------------|
| 2801 Administration and Support Services                          | 706032         | 743028         | 791830         | 796562         | 817232         |
| 2805 Organizing and Promoting Economic and Commercial Development | 712312         | 745332         | 805501         | 826021         | 854316         |
| 2810 Trade and Strategic Inventory                                | 252402         | 283589         | 281698         | 286639         | 297497         |
| 2815 Industrial and Trade Sector Competitiveness                  | 346843         | 395306         | 410745         | 416434         | 422074         |
| 2820 Following Up and Monitoring Trade Markets                    | 52929          | 61399          | 64184          | 65530          | 69630          |
| <b>Total</b>  | <b>2070518</b> | <b>2228654</b> | <b>2353958</b> | <b>2391186</b> | <b>2460749</b> |

Budget Chapter 1601 - Ministry of Industry and Trade Distributed According to the Program

|      |   |
|------|---|
| 2801 | Administration and Support Services Program |
|------|---|

Objective of the program :

To improve the administrative capacities, update the special regulations and instructions to develop the work of remaining programs and the executive and strategic programs for all the Ministry's directorates and departments to ensure the effective and distinguished implementation to achieve the related objectives and assist in implementing their tasks.

The strategic objective related to the program :

To make the Ministry's work more efficient and effective.

Directorates associated with the program :

- 1- Financial directorate.
- 2- Internal control directorate.
- 3- Computer directorate.
- 4- Administration directorate.
- 5- Human resources development directorate.
- 6- Knowledge directorate.

Services provided by the program :

Providing the financial and administrative support for all the programs, projects and activities of the Ministry.

Staff working in the program :

The program is implemented through a functional staff in 2011 estimated with ( 322 ) staff, including ( 238 ) males and ( 84 ) females .

Performance Measurement Indicators for program

| Performance Measurement Indicator | Base Year | Value | Actual value | Target Value | First Self Evaluation | Target |      |      |
|-----------------------------------|-----------|-------|--------------|--------------|-----------------------|--------|------|------|
|                                   |           |       | 2010         | 2011         | 2011                  | 2012   | 2013 | 2014 |
| 1                                 | 2006      | 7     | 7            | 7            | 7                     | 7      | 7    | 7    |

Appropriations OF Administration and Support Services Program as Per Activities and Projects. ( In JDs )

| Activities and Projects                | Actual           | Estimate         | Re_Estimate      | Estimate         | Indicative       |                  |
|--|------------------|------------------|------------------|------------------|------------------|------------------|
|  | 2010             | 2011             | 2011             | 2012             | 2013             | 2014             |
| <b>Current Expenditures</b>            | 2,715,509        | 2,857,800        | 2,839,600        | 2,935,500        | 2,953,700        | 3,033,200        |
| 601 Administrative and Support Service | 2,715,509        | 2,857,800        | 2,839,600        | 2,935,500        | 2,953,700        | 3,033,200        |
| <b>Capital Expenditures</b>            | 255,228          | 1,645,000        | 1,400,000        | 1,476,000        | 1,583,000        | 1,493,000        |
| 001 Administration Project             | 223,127          | 1,465,000        | 1,300,000        | 1,391,000        | 1,483,000        | 1,403,000        |
| 002 E-government Project               | 32,101           | 180,000          | 100,000          | 85,000           | 100,000          | 90,000           |
| Program / Treasury                     | 255,228          | 1,645,000        | 1,400,000        | 1,476,000        | 1,583,000        | 1,493,000        |
| <b>Total Program</b>                   | <b>2,970,737</b> | <b>4,502,800</b> | <b>4,239,600</b> | <b>4,411,500</b> | <b>4,536,700</b> | <b>4,526,200</b> |

Budget Chapter 1601 - Ministry of Industry and Trade Distributed According to the Program

|      |  |
|------|--|
| 2805 | Organizing and Promoting Economic and Commercial Development Program |
|------|--|

Objective of the program :

To work on developing the industry and trade and increase the efficiency of local industry to be capable of competing global products.

The strategic objective related to the program :

To contribute to enhance a stimulating environment for the economic and investment activity.

Directorates associated with the program :

- 1- External directorates ( governorates).
- 2- Trade and stock directorate.
- 3- Maintenance directorate.
- 4- Policies directorate.

Services provided by the program :

- Contribute to improving the level of citizen's living.
- Contribute to improving the quality of national industry and improve the level of public safety in factories.
- Contribute to opening new markets through signed commercial protocols and agreements.

Staff working in the program :

The program is implemented through a functional staff in 2011 estimated with ( 127 ) staff, including ( 98 ) males and ( 29 ) females .

Performance Measurement Indicators for program

| Performance Measurement Indicator  | Base Year | Value | Actual value | Target Value | First Self Evaluation | Target |      |      |
|--|-----------|-------|--------------|--------------|-----------------------|--------|------|------|
|  |           |       | 2010         | 2011         |                       | 2011   | 2012 | 2013 |
| 1 Number of production inputs exempted from tax custom (annually).               | 2006      | 145   | 30           | 30           | 30                    | 30     | 30   | 30   |
| 2 Number of factories included in the industrial awareness and control programs. | 2006      | 170   | 350          | 400          | 400                   | 450    | 500  | 550  |

Appropriations OF Organizing and Promoting Economic and Commercial Development Program as Per Activities and Projects (In JDs )

| Activities and Projects                   | Actual            | Estimate         | Re_Estimate      | Estimate         | Indicative       |                  |
|---|-------------------|------------------|------------------|------------------|------------------|------------------|
|   | 2010              | 2011             | 2011             | 2012             | 2013             | 2014             |
| <b>Current Expenditures</b>               | <b>3,124,174</b>  | <b>3,270,000</b> | <b>3,269,000</b> | <b>3,521,900</b> | <b>3,611,900</b> | <b>3,736,000</b> |
| 601 Organizing and implementing investm   | 521,208           | 600,000          | 599,000          | 601,900          | 611,900          | 636,000          |
| 602 Supporting investment affairs institu | 2,602,966         | 2,670,000        | 2,670,000        | 2,920,000        | 3,000,000        | 3,100,000        |
| <b>Capital Expenditures</b>               | <b>7,060,968</b>  | <b>6,387,600</b> | <b>4,352,000</b> | <b>4,820,000</b> | <b>5,904,000</b> | <b>5,857,000</b> |
| 001 Organizing and Promoting Economic     | 0                 | 20,000           | 20,000           | 20,000           | 20,000           | 20,000           |
| 004 Supporting the projects of Jordan Inv | 1,800,000         | 1,080,000        | 1,080,000        | 1,190,000        | 1,450,000        | 1,500,000        |
| 005 Supporting the projects of Jordanian  | 5,000,000         | 2,100,000        | 2,100,000        | 1,955,000        | 2,000,000        | 2,000,000        |
| 006 National Strategy for E-Commerce      | 260,968           | 222,600          | 120,000          | 75,000           | 147,000          | 100,000          |
| 007 Implementing the industrial policy do | 0                 | 2,910,000        | 1,000,000        | 1,445,000        | 2,099,000        | 2,102,000        |
| 009 Executing foreign trade strategy      | 0                 | 55,000           | 32,000           | 60,000           | 78,000           | 60,000           |
| 011 Protecting the national production    | 0                 | 0                | 0                | 75,000           | 110,000          | 75,000           |
| Program / Treasury                        | 7,060,968         | 6,387,600        | 4,352,000        | 4,820,000        | 5,904,000        | 5,857,000        |
| <b>Total Program</b>                      | <b>10,185,142</b> | <b>9,657,600</b> | <b>7,621,000</b> | <b>8,341,900</b> | <b>9,515,900</b> | <b>9,593,000</b> |

Budget Chapter 1601 - Ministry of Industry and Trade Distributed According to the Program

|   |   |             |               |                  |               |                       |         |      |      |
|---|---|-------------|---------------|------------------|---------------|-----------------------|---------|------|------|
| 2810  | Trade and Strategic Inventory Program                                   |             |               |                  |               |                       |         |      |      |
| <u>Objective of the program :</u>   |   |             |               |                  |               |                       |         |      |      |
| To enhance the role of local and foreign trade in the GDP and provide the basic goods with suitable quality and at reasonable prices as well as to preserve the livestock through increasing the number of fodder centers to serve ranchers easily. |   |             |               |                  |               |                       |         |      |      |
| <u>The strategic objective related to the program :</u>   |   |             |               |                  |               |                       |         |      |      |
| To regulate and control the internal and external trade.  |   |             |               |                  |               |                       |         |      |      |
| <u>Directorates associated with the program :</u>   |   |             |               |                  |               |                       |         |      |      |
| 1- External directorates.<br>2- Commercial register directorate.<br>3- Legal affairs directorate.   |   |             |               |                  |               |                       |         |      |      |
| <u>Services provided by the program :</u>   |   |             |               |                  |               |                       |         |      |      |
| - Provide basic goods to the citizen at reasonable quality and price.   |   |             |               |                  |               |                       |         |      |      |
| <u>Staff working in the program :</u>   |   |             |               |                  |               |                       |         |      |      |
| The program is implemented through a functional staff in 2011 estimated with ( 80 ) staff, including ( 31 ) males and ( 49 ) females .  |   |             |               |                  |               |                       |         |      |      |
| <b>Performance Measurement Indicators for program</b>   |   |             |               |                  |               |                       |         |      |      |
| Performance Measurement Indicator   |   | Base Year   | Value         | Actual value     | Target Value  | First Self Evaluation | Target  |      |      |
|   |   |             |               | 2010             | 2011          | 2011                  | 2012    | 2013 | 2014 |
| 1   | Number of commercial records that their status is corrected (annually). | 2006        | 8000          | 8000             | 8500          | 8000                  | 8000    | 8000 | 8000 |
| Appropriations OF Trade and Strategic Inventory Program as Per Activities and Projects. ( In JDs )  |   |             |               |                  |               |                       |         |      |      |
| Activities and Projects   |   | Actual 2010 | Estimate 2011 | Re_Estimate 2011 | Estimate 2012 | Indicative 2013 2014  |         |      |      |
| Current Expenditures  |   | 413,773     | 464,900       | 464,900          | 455,800       | 463,900               | 481,700 |      |      |
| 601   | Regulating domestic and foreign com                                     | 413,773     | 464,900       | 464,900          | 455,800       | 463,900               | 481,700 |      |      |
| Capital Expenditures  |   | 22,580      | 51,000        | 51,000           | 85,000        | 75,000                | 65,000  |      |      |
| 002   | Reconciling trade registry condition                                    | 22,580      | 50,000        | 50,000           | 60,000        | 60,000                | 50,000  |      |      |
| 003   | Early alarm of the Kingdom's increas                                    | 0           | 1,000         | 1,000            | 25,000        | 15,000                | 15,000  |      |      |
| Program / Treasury  |   | 22,580      | 51,000        | 51,000           | 85,000        | 75,000                | 65,000  |      |      |
| Total Program   |   | 436,353     | 515,900       | 515,900          | 540,800       | 538,900               | 546,700 |      |      |

Budget Chapter 1601 - Ministry of Industry and Trade Distributed According to the Program

|      |   |
|------|---|
| 2815 | Industrial and Trade Sector Competitiveness Program |
|------|---|

Objective of the program :

To develop a policy for competition which enforces market mechanisms through upgrading the capacities of concerned authorities by applying competition law and awareness of its provisions, find a reliable database in conducting studies related to competition in markets, and set competition in some economic sectors.

The strategic objective related to the program :

To maximize the performance of commercial and industrial sectors.

Directorates associated with the program :

- 1- Competitiveness.
- 2- National Production Protection.
- 3- Property protection.

Services provided by the program :

- Enhance competitiveness and local capacities.
- Contribute to improving the investment environment.

Staff working in the program :

The program is implemented through a functional staff in 2011 estimated with ( 117 ) staff, including ( 61 ) males and ( 56 ) females .

**Performance Measurement Indicators for program**

| Performance Measurement Indicator     | Base Year | Value | Actual value | Target Value | First Self Evaluation | Target |      |      |
|---------------------------------------|-----------|-------|--------------|--------------|-----------------------|--------|------|------|
|                                       |           |       | 2010         | 2011         | 2011                  | 2012   | 2013 | 2014 |
| 1 Average of national exports growth. | 2006      | %12.9 | %10          | %10          | %10                   | %10    | %10  | %10  |
| 2 The average growth of imports.      | 2006      | %9    | %10          | %10          | %10                   | %10.3  | %10  | %10  |

**Appropriations OF Industrial and Trade Sector Competitiveness Program as Per Activities and Projects. ( In JDs )**

| Activities and Projects                  | Actual  | Estimate | Re_Estimate | Estimate | Indicative |           |
|--|---------|----------|-------------|----------|------------|-----------|
|  | 2010    | 2011     | 2011        | 2012     | 2013       | 2014      |
| <b>Current Expenditures</b>              | 725,612 | 832,000  | 827,000     | 849,300  | 861,200    | 873,000   |
| 601 Enhancing cooperative capacity for t | 725,612 | 832,000  | 827,000     | 849,300  | 861,200    | 873,000   |
| <b>Capital Expenditures</b>              | 38,722  | 70,000   | 70,000      | 120,000  | 175,000    | 175,000   |
| 001 Spreading Competition Culture        | 38,722  | 70,000   | 70,000      | 100,000  | 140,000    | 140,000   |
| 003 Promotion and awareness of the sign  | 0       | 0        | 0           | 20,000   | 35,000     | 35,000    |
| Program / Treasury                       | 38,722  | 70,000   | 70,000      | 120,000  | 175,000    | 175,000   |
| <b>Total Program</b>                     | 764,334 | 902,000  | 897,000     | 969,300  | 1,036,200  | 1,048,000 |



Budget Chapter 1601 - Ministry of Industry and Trade Distributed According to the Program

|      |   |
|------|---|
| 2820 | Following Up and Monitoring Trade Markets Program |
|------|---|

Objective of the program :

To ensure the quality of goods and their availability in markets at reasonable prices and to prevent the manipulation of traders with customer's food and thereby preserving the rights of traders and owners of food factories through the effective control on markets and activation of customer protection society.

The strategic objective related to the program :

To develop and activate legislations to protect the rights of consumers and business sector.

Directorates associated with the program :

- 1- Foreign directorates.
- 2- Markets control directorate.
- 3-Industrial development directorate.

Services provided by the program :

- Improve the level of services provided to citizens.

Staff working in the program :

The program is implemented through a functional staff in 2011 estimated with ( 59 ) staff, including ( 50 ) males and ( 9 ) females .

Performance Measurement Indicators for program

| Performance Measurement Indicator      | Base Year | Value | Actual value | Target Value | First Self Evaluation | Target |      |      |
|--|-----------|-------|--------------|--------------|-----------------------|--------|------|------|
|  |           |       | 2010         | 2011         | 2011                  | 2012   | 2013 | 2014 |
| 1 Number of trading violations issued. | 2006      | 4103  | 2436         | 2330         | 2335                  | 2045   | 1250 | 1200 |

Appropriations OF Following Up and Monitoring Trade Markets Program as Per Activities and Projects. ( In JDs )

| Activities and Projects                 | Actual         | Estimate       | Re_Estimate    | Estimate       | Indicative     |                |
|---|----------------|----------------|----------------|----------------|----------------|----------------|
|   | 2010           | 2011           | 2011           | 2012           | 2013           | 2014           |
| Current Expenditures                    | 345,944        | 401,300        | 401,300        | 414,500        | 423,300        | 450,100        |
| 601 Markets control and follow up       | 345,944        | 401,300        | 401,300        | 414,500        | 423,300        | 450,100        |
| Capital Expenditures                    | 0              | 40,000         | 40,000         | 40,000         | 50,000         | 50,000         |
| 001 Following Up and Monitoring Trade M | 0              | 40,000         | 40,000         | 40,000         | 50,000         | 50,000         |
| Program / Treasury                      | 0              | 40,000         | 40,000         | 40,000         | 50,000         | 50,000         |
| <b>Total Program</b>                    | <b>345,944</b> | <b>441,300</b> | <b>441,300</b> | <b>454,500</b> | <b>473,300</b> | <b>500,100</b> |

**Vision** A distinguished ministry that follows a pioneer and initiative role in developing national economy and reinforcing competitiveness, in order to achieve the national objectives, upgrade national economy to reach levels that are internationally distinctive, whereas its effects can reflect on citizens' living conditions.

**Mission** Contributing in realizing sustainable economic development through efficient and effective management of Jordan's economic, commercial, regional, and multinational relations, in addition to developing and executing policies, legislations and programs aiming at reinforcing business and investment environment, which shall accordingly increase the economic attractiveness, and ensure the protection of rights and interests of consumers and the business sector.

Legal Framework : Industry and Trade Law No. (18) for the year 1998, as amended.

**Strategic Plan :**

Preparation Year :2009

Period Covered By The Plan :2010-2012

| Strategic Objectives / Performance Indicators   |   |   |  |              |              |                            |        |      |      |       |
|---|---|---|--|--------------|--------------|----------------------------|--------|------|------|-------|
| Strategic Objectives Description  | Performance Measurement Indicators  | Base Value  |  | Actual Value | Target Value | Initial Internal Evaluatio | Target |      |      |       |
|   |   | Base Year   | Value  |              |              |                            | 2010   | 2011 | 2011 | 2012  |
|   |   | 1 - Maximizing the performance of both commercial and industrial sectors. | 1 Percentage of industrial sector contribution in the GDP (base prices). | 2006         | %25.7        | %25                        | %25.5  | %25  | %26  | %26.5 |
| 2 - Contributing to the reinforcement of an environment that encourages economic and investment activities. | 1 Growth average of local employment in the industrial sector.                      | 2005  | %7.2   | %5.5         | %5.5         | %5.5                       | %5.5   | %5.5 | %5.8 |       |
| 3 - Organizing and controlling domestic and foreign trade.  | 1 Number of complaints regarding the availability and quality of basic commodities. | 2006  | 300  | 256          | 230          | 230                        | 200    | 185  | 150  |       |
| 4 - Developing and activating legislations to protect the rights of consumers and business sector.          | 1 Number of complaints of stakeholders who deal with the local market.              | 2006  | 420  | 265          | 230          | 235                        | 210    | 185  | 160  |       |
| 5 - Making the Ministry's work more efficient and effective.  | 1 Satisfaction degree of the Ministry's clients.                                    | 2006  | %85  | %89          | %91          | %90                        | %92    | %93  | %95  |       |

| Programs / Performance Indicators |   |  |            |  |                                       |              |                  |        |      |      |      |
|-----------------------------------|---|--|------------|--|---------------------------------------|--------------|------------------|--------|------|------|------|
| Goal                              | Programs  | Description of Performance Indicators  | Base Value |  | Actual Value                          | Target Value | Initial Internal | Target |      |      |      |
|                                   |   |  | Base Year  | Value  |                                       |              |                  | 2010   | 2011 | 2011 | 2012 |
|                                   |   |  | 1          | 2815 Industrial and Trade Sector Competitiveness | 1 Average of national exports growth. | 2006         | %12.9            | %10    | %10  | %10  | %10  |
|                                   |   | 2 The average growth of imports.   | 2006       | %9   | %10                                   | %10          | %10              | %10.3  | %10  | %10  |      |
| 2                                 | 2805 Organizing and Promoting Economic and Commercial Development | 1 Number of production inputs exempted from tax custom (annually).               | 2006       | 145  | 30                                    | 30           | 30               | 30     | 30   | 30   |      |
|                                   |   | 2 Number of factories included in the industrial awareness and control programs. | 2006       | 170  | 350                                   | 400          | 400              | 450    | 500  | 550  |      |
| 3                                 | 2810 Trade and Strategic Inventory                                | 1 Number of commercial records that their status is corrected (annually).        | 2006       | 8000   | 8000                                  | 8500         | 8000             | 8000   | 8000 | 8000 |      |
| 4                                 | 2820 Following Up and Monitoring Trade Markets                    | 1 Number of trading violations issued.   | 2006       | 4103   | 2436                                  | 2330         | 2335             | 2045   | 1250 | 1200 |      |
| 5                                 | 2801 Administration and Support Services                          | 1 Number of simplified procedures for service recipients.                        | 2006       | 7  | 7                                     | 7            | 7                | 7      | 7    | 7    |      |

| Programs Appropriations |          |   |                  |          |           |            |           |            |            |         |
|-------------------------|----------|---|------------------|----------|-----------|------------|-----------|------------|------------|---------|
| Goal                    | Programs |   |                  | Actual   | Estimated | Restemated | Estimated | Indecative | Indecative |         |
|                         |          |   |                  | 2010     | 2011      | 2011       | 2012      | 2013       | 2014       |         |
| 1                       | 2815     | Industrial and Trade Sector Competitiveness               |                  | Current  | 725612    | 832000     | 827000    | 849300     | 861200     | 873000  |
|                         |          |   |                  | Capital  | 38722     | 70000      | 70000     | 120000     | 175000     | 175000  |
|                         |          |   |                  | Total    | 764334    | 902000     | 897000    | 969300     | 1036200    | 1048000 |
| 2                       | 2805     | Organizing and Promoting Economic and Commercial Developm |                  | Current  | 3124174   | 3270000    | 3269000   | 3521900    | 3611900    | 3736000 |
|                         |          |   |                  | Capital  | 7060968   | 6387600    | 4352000   | 4820000    | 5904000    | 5857000 |
|                         |          |   |                  | Total    | 10185142  | 9657600    | 7621000   | 8341900    | 9515900    | 9593000 |
| 3                       | 2810     | Trade and Strategic Inventory                             |                  | Current  | 413773    | 464900     | 464900    | 455800     | 463900     | 481700  |
|                         |          |   |                  | Capital  | 22580     | 51000      | 51000     | 85000      | 75000      | 65000   |
|                         |          |   |                  | Total    | 436353    | 515900     | 515900    | 540800     | 538900     | 546700  |
| 4                       | 2820     | Following Up and Monitoring Trade Markets                 |                  | Current  | 345944    | 401300     | 401300    | 414500     | 423300     | 450100  |
|                         |          |   |                  | Capital  | 0         | 40000      | 40000     | 40000      | 50000      | 50000   |
|                         |          |   |                  | Total    | 345944    | 441300     | 441300    | 454500     | 473300     | 500100  |
| 5                       | 2801     | Administration and Support Services                       |                  | Current  | 2715509   | 2857800    | 2839600   | 2935500    | 2953700    | 3033200 |
|                         |          |   |                  | Capital  | 255228    | 1645000    | 1400000   | 1476000    | 1583000    | 1493000 |
|                         |          |   |                  | Total    | 2970737   | 4502800    | 4239600   | 4411500    | 4536700    | 4526200 |
|                         |          |   | Total of Current | 7325012  | 7826000   | 7801800    | 8177000   | 8314000    | 8574000    |         |
|                         |          |   | Total of Capital | 7377498  | 8193600   | 5913000    | 6541000   | 7787000    | 7640000    |         |
|                         |          |   | Total of Chapter | 14702510 | 16019600  | 13714800   | 14718000  | 16101000   | 16214000   |         |

| Current Activities Appropriations |          |  |  |         |           |            |           |            |            |         |
|-----------------------------------|----------|--|--|---------|-----------|------------|-----------|------------|------------|---------|
| Prog.                             | Projects |  |  | Actual  | Estimated | Restemated | Estimated | Indecative | Indecative |         |
|                                   |          |  |  | 2010    | 2011      | 2011       | 2012      | 2013       | 2014       |         |
| 2815                              | 601      | Enhancing cooperative capacity for the industrial and commercial secto |  | 725612  | 832000    | 827000     | 849300    | 861200     | 873000     |         |
|                                   |          | Total of Program   |  | 725612  | 832000    | 827000     | 849300    | 861200     | 873000     |         |
| 2805                              | 601      | Organizing and implementing investment promotion programs              |  | 521208  | 600000    | 599000     | 601900    | 611900     | 636000     |         |
|                                   |          | 602  | Supporting investment affairs institutions |         | 2602966   | 2670000    | 2670000   | 2920000    | 3000000    | 3100000 |
|                                   |          |  | Total of Program                           |         | 3124174   | 3270000    | 3269000   | 3521900    | 3611900    | 3736000 |
| 2810                              | 601      | Regulating domestic and foreign commerce                               |  | 413773  | 464900    | 464900     | 455800    | 463900     | 481700     |         |
|                                   |          | Total of Program   |  | 413773  | 464900    | 464900     | 455800    | 463900     | 481700     |         |
| 2820                              | 601      | Markets control and follow up  |  | 345944  | 401300    | 401300     | 414500    | 423300     | 450100     |         |
|                                   |          | Total of Program   |  | 345944  | 401300    | 401300     | 414500    | 423300     | 450100     |         |
| 2801                              | 601      | Administrative and Support Services                                    |  | 2715509 | 2857800   | 2839600    | 2935500   | 2953700    | 3033200    |         |
|                                   |          | Total of Program   |  | 2715509 | 2857800   | 2839600    | 2935500   | 2953700    | 3033200    |         |
|                                   |          |  | Total                                      | 7325012 | 7826000   | 7801800    | 8177000   | 8314000    | 8574000    |         |

## Capital Projects Appropriations

| Prog. | Projects |   | Actual  | Estimated | Restemated | Estimated | Indecative | Indecative |
|-------|----------|---|---------|-----------|------------|-----------|------------|------------|
|       |          |   | 2010    | 2011      | 2011       | 2012      | 2013       | 2014       |
| 2815  | 001      | Spreading Competition Culture   | 38722   | 70000     | 70000      | 100000    | 140000     | 140000     |
|       | 003      | Promotion and awareness of the significance of industrial ownership rig | 0       | 0         | 0          | 20000     | 35000      | 35000      |
|       |          | Total of Program  | 38722   | 70000     | 70000      | 120000    | 175000     | 175000     |
| 2805  | 001      | Organizing and Promoting Economic and Commercial Development Pro        | 0       | 20000     | 20000      | 20000     | 20000      | 20000      |
|       | 004      | Supporting the projects of Jordan Investment Board                      | 1800000 | 1080000   | 1080000    | 1190000   | 1450000    | 1500000    |
|       | 005      | Supporting the projects of Jordanian Enterprise Development Corporat    | 5000000 | 2100000   | 2100000    | 1955000   | 2000000    | 2000000    |
|       | 006      | National Strategy for E-Commerce  | 260968  | 222600    | 120000     | 75000     | 147000     | 100000     |
|       | 007      | Implementing the industrial policy document                             | 0       | 2910000   | 1000000    | 1445000   | 2099000    | 2102000    |
|       | 009      | Executing foreign trade strategy  | 0       | 55000     | 32000      | 60000     | 78000      | 60000      |
|       | 011      | Protecting the national production                                      | 0       | 0         | 0          | 75000     | 110000     | 75000      |
|       |          | Total of Program  | 7060968 | 6387600   | 4352000    | 4820000   | 5904000    | 5857000    |
| 2810  | 002      | Reconciling trade registry conditions                                   | 22580   | 50000     | 50000      | 60000     | 60000      | 50000      |
|       | 003      | Early alarm of the Kingdom's increasing imports                         | 0       | 1000      | 1000       | 25000     | 15000      | 15000      |
|       |          | Total of Program  | 22580   | 51000     | 51000      | 85000     | 75000      | 65000      |
| 2820  | 001      | Following Up and Monitoring Trade Markets Program Administration Pr     | 0       | 40000     | 40000      | 40000     | 50000      | 50000      |
|       |          | Total of Program  | 0       | 40000     | 40000      | 40000     | 50000      | 50000      |
| 2801  | 001      | Administration Project  | 223127  | 1465000   | 1300000    | 1391000   | 1483000    | 1403000    |
|       | 002      | E-government Project  | 32101   | 180000    | 100000     | 85000     | 100000     | 90000      |
|       |          | Total of Program  | 255228  | 1645000   | 1400000    | 1476000   | 1583000    | 1493000    |
|       |          | Total   | 7377498 | 8193600   | 5913000    | 6541000   | 7787000    | 7640000    |

# Overall Summary of Current Expenditures for the years 2010 - 2014

Chapter: 1601 Ministry of Industry and Trade

( In JDs )

| Group | Item | Description                                 | Actual<br>2010 | Estimated<br>2011 | Restimated<br>2011 | Estimated<br>2012 | Indicative<br>2013 | Indicative<br>2014 |
|-------|------|---|----------------|-------------------|--------------------|-------------------|--------------------|--------------------|
| 21    |      | Compensations of Employees                  |                |                   |                    |                   |                    |                    |
| 2111  |      | Salaries, Wages and allowances              |                |                   |                    |                   |                    |                    |
|       | 101  | Classified Employees' Salaries              | 210080         | 221000            | 221000             | 221600            | 222200             | 224200             |
|       | 102  | Permanent Unclassified Employees' Salarie   | 654684         | 677000            | 677000             | 695000            | 706400             | 811300             |
|       | 103  | Contract Employees' Salaries                | 451939         | 466000            | 466000             | 522700            | 524100             | 525400             |
|       | 105  | Personal Cost of Living Allowance           | 1115428        | 1285600           | 1285600            | 1288700           | 1257900            | 1257900            |
|       | 106  | Family Allowance                            | 94759          | 102000            | 102000             | 103000            | 105400             | 108200             |
|       | 107  | Basic Allowance                             | 254927         | 264000            | 264000             | 268300            | 271900             | 275500             |
|       | 110  | Overtime Allowance                          | 8947           | 17000             | 17000              | 17000             | 17000              | 17000              |
|       | 111  | Additional Allowance                        | 241926         | 237000            | 237000             | 250000            | 254100             | 257700             |
|       | 112  | Other Allowances                            | 449695         | 463000            | 463000             | 525000            | 528000             | 531500             |
|       | 113  | Transportation Allowance                    | 157622         | 168500            | 168500             | 172500            | 175300             | 178200             |
|       | 114  | Transport Allowance                         | 75196          | 98000             | 98000              | 81700             | 83700              | 86100              |
|       | 115  | Field Visit Allowance                       | 0              | 3000              | 3000               | 3000              | 3000               | 3000               |
|       | 116  | Employees' bonuses                          | 129592         | 141500            | 141500             | 141500            | 145000             | 145000             |
|       |      | <b>Total</b>                                | <b>3844795</b> | <b>4143600</b>    | <b>4143600</b>     | <b>4290000</b>    | <b>4294000</b>     | <b>4421000</b>     |
| 2121  |      | Social Security Contributions               |                |                   |                    |                   |                    |                    |
|       | 301  | Social Security                             | 266978         | 322400            | 298200             | 309000            | 322000             | 332000             |
|       |      | <b>Total</b>                                | <b>266978</b>  | <b>322400</b>     | <b>298200</b>      | <b>309000</b>     | <b>322000</b>      | <b>332000</b>      |
| 22    |      | Use of Goods and Services                   |                |                   |                    |                   |                    |                    |
| 2211  |      | Use of Goods and Services                   |                |                   |                    |                   |                    |                    |
|       | 201  | Rents                                       | 48086          | 79000             | 79000              | 85000             | 87000              | 92000              |
|       | 202  | Telecommunications Services                 | 25079          | 45000             | 45000              | 40000             | 43000              | 45000              |
|       | 203  | Water                                       | 1811           | 4000              | 4000               | 4000              | 4500               | 5000               |
|       | 204  | Electricity                                 | 30915          | 35000             | 35000              | 35000             | 36000              | 37000              |
|       | 205  | Fuels                                       | 54306          | 55000             | 55000              | 55000             | 59000              | 62000              |
|       | 206  | Maintenance of Machines, furniture and acc  | 15967          | 18000             | 18000              | 18000             | 20000              | 22000              |
|       | 207  | Maintenance of Vehicles, Heavy Duty Machi   | 19972          | 17000             | 17000              | 20000             | 20000              | 22000              |
|       | 208  | Repair and maintenance of buildings and ac  | 15972          | 15000             | 15000              | 15000             | 16000              | 17000              |
|       | 209  | Office Supplies                             | 54268          | 75000             | 75000              | 70000             | 71000              | 72000              |
|       | 210  | Raw materials ( Medicines, Clothes, Food, F | 1904           | 4000              | 4000               | 4000              | 4500               | 5000               |
|       | 211  | Cleaning Services and supplies ( including  | 56466          | 65000             | 65000              | 65000             | 66000              | 68000              |
|       | 212  | Insurance                                   | 0              | 5000              | 5000               | 5000              | 5500               | 6000               |
|       | 213  | Official Travel Missions                    | 6492           | 8000              | 8000               | 7000              | 7500               | 8000               |
|       | 214  | Other goods and services expenses           | 248576         | 210000            | 210000             | 190000            | 203000             | 205000             |
|       |      | <b>Total</b>                                | <b>579814</b>  | <b>635000</b>     | <b>635000</b>      | <b>613000</b>     | <b>643000</b>      | <b>666000</b>      |
| 26    |      | Subsidy/Grants                              |                |                   |                    |                   |                    |                    |
| 2631  |      | Subsidy to public gov. units                |                |                   |                    |                   |                    |                    |
|       | 313  | Subsidy to public gov.units/current         | 2602966        | 2670000           | 2670000            | 2920000           | 3000000            | 3100000            |
|       |      | <b>Total</b>                                | <b>2602966</b> | <b>2670000</b>    | <b>2670000</b>     | <b>2920000</b>    | <b>3000000</b>     | <b>3100000</b>     |
| 28    |      | Other expenditures                          |                |                   |                    |                   |                    |                    |
| 2821  |      | Other current expenses                      |                |                   |                    |                   |                    |                    |
|       | 302  | Contributions                               | 0              | 25000             | 25000              | 25000             | 25000              | 25000              |
|       | 303  | Scientific Scholarships and Training Course | 30459          | 30000             | 30000              | 20000             | 30000              | 30000              |
|       |      | <b>Total</b>                                | <b>30459</b>   | <b>55000</b>      | <b>55000</b>       | <b>45000</b>      | <b>55000</b>       | <b>55000</b>       |
|       |      | <b>Total of Chapter</b>                     | <b>7325012</b> | <b>7826000</b>    | <b>7801800</b>     | <b>8177000</b>    | <b>8314000</b>     | <b>8574000</b>     |

# Overall Summary of Capital Expenditures For The Years 2010 - 2014

chapter : 1601 Ministry of Industry and Trade

( In JDs )

| Group | Item | Description                                 | Actual 2010 | Estimated 2011 | Re-Estimated 2011 | Estimated 2012 | Indicative 2013 | Indicative 2014 |
|-------|------|---|-------------|----------------|-------------------|----------------|-----------------|-----------------|
|       |      | Expenditures                                |             |                |                   |                |                 |                 |
| 21    |      | Compensations of Employees                  |             |                |                   |                |                 |                 |
| 2111  |      | Salaries, Wages and allowances              |             |                |                   |                |                 |                 |
|       | 501  | Salaries                                    | 0           | 0              | 0                 | 25000          | 35000           | 35000           |
|       | 502  | Wages                                       | 0           | 20000          | 20000             | 20000          | 20000           | 20000           |
|       |      | Total                                       | 0           | 20000          | 20000             | 45000          | 55000           | 55000           |
| 22    |      | Use of Goods and Services                   |             |                |                   |                |                 |                 |
| 2211  |      | Use of Goods and Services                   |             |                |                   |                |                 |                 |
|       | 510  | Buildings and facilities repair and mainten | 59673       | 250000         | 190000            | 101000         | 140000          | 115000          |
|       | 512  | Operating and maintenance Expenses          | 514253      | 3773600        | 1646000           | 2027000        | 2899000         | 2792000         |
|       |      | Total                                       | 573926      | 4023600        | 1836000           | 2128000        | 3039000         | 2907000         |
| 26    |      | Subsidy/Grants                              |             |                |                   |                |                 |                 |
| 2632  |      | Subsidy to other public gov. units/capital  |             |                |                   |                |                 |                 |
|       | 509  | Subsidy to other public gov. units/capital  | 6800000     | 3890000        | 3890000           | 4091700        | 4396700         | 4446700         |
|       |      | Total                                       | 6800000     | 3890000        | 3890000           | 4091700        | 4396700         | 4446700         |
| 28    |      | Other expenditures                          |             |                |                   |                |                 |                 |
| 2822  |      | Other Capital expenditures                  |             |                |                   |                |                 |                 |
|       | 504  | Studies, Researches and Consultations       | 0           | 65000          | 37000             | 153000         | 190000          | 160000          |
|       |      | Total                                       | 0           | 65000          | 37000             | 153000         | 190000          | 160000          |
|       |      | Fixed Assets                                |             |                |                   |                |                 |                 |
| 31    |      | Non-financial Assets                        |             |                |                   |                |                 |                 |
| 3112  |      | Machinery and Equipment                     |             |                |                   |                |                 |                 |
|       | 505  | Equipments, Machines and Apparatus          | 3572        | 195000         | 130000            | 123300         | 106300          | 71300           |
|       |      | Total                                       | 3572        | 195000         | 130000            | 123300         | 106300          | 71300           |
|       |      | Total of Chapter                            | 7377498     | 8193600        | 5913000           | 6541000        | 7787000         | 7640000         |

**Current Expenditures According to Program and Activities For The Years 2010 - 2014**

Chapter : 1601 - Ministry of Industry and Trade

(In JDs)

| Program : 2801 - Administration and Support Services |      |  |                |                |                   |                |                 |                 |
|--|------|--|----------------|----------------|-------------------|----------------|-----------------|-----------------|
| Activity : 601 - Administrative and Support Services |      |  |                |                |                   |                |                 |                 |
| Group  | Item | Description                                  | Actual 2010    | Estimated 2011 | Re-estimated 2011 | Estimated 2012 | Indicative 2013 | Indicative 2014 |
| 21   |      | <b>Compensations of Employees</b>            |                |                |                   |                |                 |                 |
| 2111   |      | <b>Salaries, Wages and allowances</b>        |                |                |                   |                |                 |                 |
|  | 101  | Classified Employees' Salaries               | 125080         | 135000         | 135000            | 137000         | 136000          | 134000          |
|  | 102  | Permanent Unclassified Employees' Salarie    | 329198         | 319000         | 319000            | 315800         | 317000          | 365800          |
|  | 103  | Contract Employees' Salaries                 | 144377         | 165000         | 165000            | 181900         | 181900          | 181900          |
|  | 105  | Personal Cost of Living Allowance            | 475461         | 492700         | 492700            | 496900         | 464900          | 464900          |
|  | 106  | Family Allowance                             | 39759          | 44000          | 44000             | 46300          | 47000           | 48000           |
|  | 107  | Basic Allowance                              | 134938         | 135000         | 135000            | 144000         | 144000          | 144000          |
|  | 110  | Overtime Allowance                           | 6690           | 11000          | 11000             | 11000          | 11000           | 11000           |
|  | 111  | Additional Allowance                         | 126926         | 124000         | 124000            | 129500         | 130000          | 130000          |
|  | 112  | Other Allowances                             | 377264         | 380000         | 380000            | 441500         | 442000          | 443000          |
|  | 113  | Transportation Allowance                     | 64604          | 83000          | 83000             | 82200          | 83200           | 83200           |
|  | 114  | Transport Allowance                          | 41342          | 42000          | 42000             | 39200          | 40200           | 41200           |
|  | 115  | Field Visit Allowance                        | 0              | 3000           | 3000              | 3000           | 3000            | 3000            |
|  | 116  | Employees' bonuses                           | 79710          | 87000          | 87000             | 84500          | 88000           | 88000           |
|  |      | <b>Total</b>                                 | <b>1945349</b> | <b>2020700</b> | <b>2020700</b>    | <b>2112800</b> | <b>2088200</b>  | <b>2138000</b>  |
| 2121   |      | <b>Social Security Contributions</b>         |                |                |                   |                |                 |                 |
|  | 301  | Social Security                              | 177393         | 194100         | 175900            | 204700         | 214500          | 221200          |
|  |      | <b>Total</b>                                 | <b>177393</b>  | <b>194100</b>  | <b>175900</b>     | <b>204700</b>  | <b>214500</b>   | <b>221200</b>   |
| 22   |      | <b>Use of Goods and Services</b>             |                |                |                   |                |                 |                 |
| 2211   |      | <b>Use of Goods and Services</b>             |                |                |                   |                |                 |                 |
|  | 201  | Rents  | 48086          | 79000          | 79000             | 85000          | 87000           | 92000           |
|  | 202  | Telecommunications Services                  | 25079          | 45000          | 45000             | 40000          | 43000           | 45000           |
|  | 203  | Water  | 1811           | 4000           | 4000              | 4000           | 4500            | 5000            |
|  | 204  | Electricity                                  | 30915          | 35000          | 35000             | 35000          | 36000           | 37000           |
|  | 205  | Fuels  | 54306          | 55000          | 55000             | 55000          | 59000           | 62000           |
|  | 206  | Maintenance of Machines, furniture and acce  | 15967          | 18000          | 18000             | 18000          | 20000           | 22000           |
|  | 207  | Maintenance of Vehicles, Heavy Duty Machin   | 19972          | 17000          | 17000             | 20000          | 20000           | 22000           |
|  | 208  | Repair and maintenance of buildings and acc  | 15972          | 15000          | 15000             | 15000          | 16000           | 17000           |
|  | 209  | Office Supplies                              | 54268          | 75000          | 75000             | 70000          | 71000           | 72000           |
|  | 210  | Raw materials ( Medicines, Clothes, Food, Fi | 1904           | 4000           | 4000              | 4000           | 4500            | 5000            |
|  | 211  | Cleaning Services and supplies ( including c | 56466          | 65000          | 65000             | 65000          | 66000           | 68000           |
|  | 212  | Insurance                                    | 0              | 5000           | 5000              | 5000           | 5500            | 6000            |
|  | 213  | Official Travel Missions                     | 6492           | 8000           | 8000              | 7000           | 7500            | 8000            |
|  | 214  | Other goods and services expenses            | 248576         | 210000         | 210000            | 190000         | 203000          | 205000          |
|  | 006  | Medical treatments                           | 16203          | 19000          | 19000             | 20000          | 20000           | 20000           |
|  | 024  | Commercial Centers                           | 175799         | 141000         | 141000            | 140000         | 150000          | 150000          |
|  | 999  | n.e.c  | 56574          | 50000          | 50000             | 30000          | 33000           | 35000           |
|  |      | <b>Total</b>                                 | <b>579814</b>  | <b>635000</b>  | <b>635000</b>     | <b>613000</b>  | <b>643000</b>   | <b>666000</b>   |
| 28   |      | <b>Other expenditures</b>                    |                |                |                   |                |                 |                 |
| 2821   |      | <b>Other current expenses</b>                |                |                |                   |                |                 |                 |
|  | 303  | Scientific Scholarships and Training Course  | 12953          | 8000           | 8000              | 5000           | 8000            | 8000            |
|  |      | <b>Total</b>                                 | <b>12953</b>   | <b>8000</b>    | <b>8000</b>       | <b>5000</b>    | <b>8000</b>     | <b>8000</b>     |
|  |      | <b>Total of Activity</b>                     | <b>2715509</b> | <b>2857800</b> | <b>2839600</b>    | <b>2935500</b> | <b>2953700</b>  | <b>3033200</b>  |
|  |      | <b>Total of Program</b>                      | <b>2715509</b> | <b>2857800</b> | <b>2839600</b>    | <b>2935500</b> | <b>2953700</b>  | <b>3033200</b>  |

**Current Expenditures According to Program and Activities For The Years 2010 - 2014**

Chapter : 1601 - Ministry of Industry and Trade

(In JDs)

| Program : 2805 - Organizing and Promoting Economic and Commercial Development |      |   |                |                |                   |                |                 |                 |
|---|------|---|----------------|----------------|-------------------|----------------|-----------------|-----------------|
| Activity : 601 - Organizing and implementing investment promotion programs    |      |   |                |                |                   |                |                 |                 |
| Group   | Item | Description                                     | Actual 2010    | Estimated 2011 | Re-estimated 2011 | Estimated 2012 | Indicative 2013 | Indicative 2014 |
| 21  |      | Compensations of Employees                      |                |                |                   |                |                 |                 |
| 2111  |      | Salaries, Wages and allowances                  |                |                |                   |                |                 |                 |
|   | 101  | Classified Employees' Salaries                  | 30000          | 28000          | 28000             | 28000          | 28000           | 30000           |
|   | 102  | Permanent Unclassified Employees' Salaries      | 108500         | 120000         | 120000            | 121000         | 124000          | 140000          |
|   | 103  | Contract Employees' Salaries                    | 14043          | 6000           | 6000              | 7800           | 8000            | 8200            |
|   | 105  | Personal Cost of Living Allowance               | 177000         | 213200         | 213200            | 218000         | 218000          | 218000          |
|   | 106  | Family Allowance                                | 17000          | 18000          | 18000             | 18700          | 19300           | 20000           |
|   | 107  | Basic Allowance                                 | 43000          | 45000          | 45000             | 43000          | 44500           | 45800           |
|   | 110  | Overtime Allowance                              | 792            | 2000           | 2000              | 2000           | 2000            | 2000            |
|   | 111  | Additional Allowance                            | 42000          | 38000          | 38000             | 43400          | 44700           | 46000           |
|   | 113  | Transportation Allowance                        | 31285          | 27500          | 27500             | 30000          | 30000           | 31000           |
|   | 114  | Transport Allowance                             | 9906           | 19500          | 19500             | 17000          | 17400           | 18000           |
|   | 116  | Employees' bonuses                              | 13992          | 15000          | 15000             | 15000          | 15000           | 15000           |
|   |      | <b>Total</b>                                    | <b>487518</b>  | <b>532200</b>  | <b>532200</b>     | <b>543900</b>  | <b>550900</b>   | <b>574000</b>   |
| 2121  |      | Social Security Contributions                   |                |                |                   |                |                 |                 |
|   | 301  | Social Security                                 | 28750          | 36800          | 35800             | 29000          | 30000           | 31000           |
|   |      | <b>Total</b>                                    | <b>28750</b>   | <b>36800</b>   | <b>35800</b>      | <b>29000</b>   | <b>30000</b>    | <b>31000</b>    |
| 28  |      | Other expenditures                              |                |                |                   |                |                 |                 |
| 2821  |      | Other current expenses                          |                |                |                   |                |                 |                 |
|   | 302  | Contributions                                   | 0              | 25000          | 25000             | 25000          | 25000           | 25000           |
|   |      | 999 n.e.c                                       | 0              | 25000          | 25000             | 25000          | 25000           | 25000           |
|   | 303  | Scientific Scholarships and Training Course     | 4940           | 6000           | 6000              | 4000           | 6000            | 6000            |
|   |      | <b>Total</b>                                    | <b>4940</b>    | <b>31000</b>   | <b>31000</b>      | <b>29000</b>   | <b>31000</b>    | <b>31000</b>    |
|   |      | <b>Total of Activity</b>                        | <b>521208</b>  | <b>600000</b>  | <b>599000</b>     | <b>601900</b>  | <b>611900</b>   | <b>636000</b>   |
| Activity : 602 - Supporting investment affairs institutions                   |      |   |                |                |                   |                |                 |                 |
| Group   | Item | Description                                     | Actual 2010    | Estimated 2011 | Re-estimated 2011 | Estimated 2012 | Indicative 2013 | Indicative 2014 |
| 26  |      | Subsidy/Grants                                  |                |                |                   |                |                 |                 |
| 2631  |      | Subsidy to public gov. units                    |                |                |                   |                |                 |                 |
|   | 313  | Subsidy to public gov. units/current            | 2602966        | 2670000        | 2670000           | 2920000        | 3000000         | 3100000         |
|   |      | 004 Jordan Investment Board                     | 1077966        | 1150000        | 1150000           | 1200000        | 1200000         | 1200000         |
|   |      | 012 Jordan Enterprise Development Corporation   | 1500000        | 1500000        | 1500000           | 1700000        | 1800000         | 1900000         |
|   |      | 016 Jordan Agency for Enterprise and Investment | 25000          | 20000          | 20000             | 20000          | 0               | 0               |
|   |      | <b>Total</b>                                    | <b>2602966</b> | <b>2670000</b> | <b>2670000</b>    | <b>2920000</b> | <b>3000000</b>  | <b>3100000</b>  |
|   |      | <b>Total of Activity</b>                        | <b>2602966</b> | <b>2670000</b> | <b>2670000</b>    | <b>2920000</b> | <b>3000000</b>  | <b>3100000</b>  |
|   |      | <b>Total of Program</b>                         | <b>3124174</b> | <b>3270000</b> | <b>3269000</b>    | <b>3521900</b> | <b>3611900</b>  | <b>3736000</b>  |
| Program : 2810 - Trade and Strategic Inventory                                |      |   |                |                |                   |                |                 |                 |
| Activity : 601 - Regulating domestic and foreign commerce                     |      |   |                |                |                   |                |                 |                 |
| Group   | Item | Description                                     | Actual 2010    | Estimated 2011 | Re-estimated 2011 | Estimated 2012 | Indicative 2013 | Indicative 2014 |
| 21  |      | Compensations of Employees                      |                |                |                   |                |                 |                 |
| 2111  |      | Salaries, Wages and allowances                  |                |                |                   |                |                 |                 |
|   | 101  | Classified Employees' Salaries                  | 14000          | 15000          | 15000             | 15000          | 15500           | 16000           |
|   | 102  | Permanent Unclassified Employees' Salaries      | 77500          | 88000          | 88000             | 85000          | 87000           | 100000          |
|   | 103  | Contract Employees' Salaries                    | 41619          | 35000          | 35000             | 38000          | 39000           | 40000           |
|   | 105  | Personal Cost of Living Allowance               | 160000         | 194900         | 194900            | 195000         | 195000          | 195000          |
|   | 106  | Family Allowance                                | 18000          | 19000          | 19000             | 18000          | 18500           | 19000           |
|   | 107  | Basic Allowance                                 | 30000          | 31000          | 31000             | 33000          | 33700           | 34700           |
|   | 110  | Overtime Allowance                              | 385            | 1000           | 1000              | 1000           | 1000            | 1000            |
|   | 111  | Additional Allowance                            | 12000          | 10000          | 10000             | 10300          | 10600           | 11000           |
|   | 113  | Transportation Allowance                        | 14550          | 12000          | 12000             | 13000          | 13400           | 13800           |
|   | 114  | Transport Allowance                             | 9127           | 14000          | 14000             | 9500           | 9700            | 10000           |
|   | 116  | Employees' bonuses                              | 11972          | 12500          | 12500             | 13000          | 13000           | 13000           |
|   |      | <b>Total</b>                                    | <b>389153</b>  | <b>432400</b>  | <b>432400</b>     | <b>430800</b>  | <b>436400</b>   | <b>453500</b>   |
| 2121  |      | Social Security Contributions                   |                |                |                   |                |                 |                 |
|   | 301  | Social Security                                 | 20675          | 27500          | 27500             | 22000          | 22500           | 23200           |
|   |      | <b>Total</b>                                    | <b>20675</b>   | <b>27500</b>   | <b>27500</b>      | <b>22000</b>   | <b>22500</b>    | <b>23200</b>    |
| 28  |      | Other expenditures                              |                |                |                   |                |                 |                 |
| 2821  |      | Other current expenses                          |                |                |                   |                |                 |                 |
|   | 303  | Scientific Scholarships and Training Course     | 3945           | 5000           | 5000              | 3000           | 5000            | 5000            |
|   |      | <b>Total</b>                                    | <b>3945</b>    | <b>5000</b>    | <b>5000</b>       | <b>3000</b>    | <b>5000</b>     | <b>5000</b>     |
|   |      | <b>Total of Activity</b>                        | <b>413773</b>  | <b>464900</b>  | <b>464900</b>     | <b>455800</b>  | <b>463900</b>   | <b>481700</b>   |
|   |      | <b>Total of Program</b>                         | <b>413773</b>  | <b>464900</b>  | <b>464900</b>     | <b>455800</b>  | <b>463900</b>   | <b>481700</b>   |



| Program : 2815 - Industrial and Trade Sector Competitiveness                             |      |   |                |                |                   |                |                 |                 |
|--|------|---|----------------|----------------|-------------------|----------------|-----------------|-----------------|
| Activity : 601 - Enhancing cooperative capacity for the industrial and commercial sector |      |   |                |                |                   |                |                 |                 |
| Group  | Item | Description                                 | Actual 2010    | Estimated 2011 | Re-estimated 2011 | Estimated 2012 | Indicative 2013 | Indicative 2014 |
| 21   |      | Compensations of Employees                  |                |                |                   |                |                 |                 |
| 2111   |      | Salaries, Wages and allowances              |                |                |                   |                |                 |                 |
|  | 101  | Classified Employees' Salaries              | 24000          | 25000          | 25000             | 24000          | 24700           | 25500           |
|  | 102  | Permanent Unclassified Employees' Salarie   | 67000          | 75000          | 75000             | 74000          | 76000           | 80000           |
|  | 103  | Contract Employees' Salaries                | 251900         | 255000         | 255000            | 290500         | 290500          | 290500          |
|  | 105  | Personal Cost of Living Allowance           | 163000         | 213200         | 213200            | 204800         | 205000          | 205000          |
|  | 106  | Family Allowance                            | 10000          | 11000          | 11000             | 10000          | 10300           | 10600           |
|  | 107  | Basic Allowance                             | 25000          | 30000          | 30000             | 26500          | 27300           | 28000           |
|  | 110  | Overtime Allowance                          | 403            | 1500           | 1500              | 1500           | 1500            | 1500            |
|  | 111  | Additional Allowance                        | 32000          | 35000          | 35000             | 35000          | 36000           | 37000           |
|  | 112  | Other Allowances                            | 72431          | 83000          | 83000             | 83500          | 86000           | 88500           |
|  | 113  | Transportation Allowance                    | 32635          | 28500          | 28500             | 30800          | 31700           | 32700           |
|  | 114  | Transport Allowance                         | 9143           | 16000          | 16000             | 10000          | 10200           | 10500           |
|  | 116  | Employees' bonuses                          | 10919          | 13000          | 13000             | 14000          | 14000           | 14000           |
|  |      | <b>Total</b>                                | <b>698431</b>  | <b>786200</b>  | <b>786200</b>     | <b>804600</b>  | <b>813200</b>   | <b>823800</b>   |
| 2121   |      | Social Security Contributions               |                |                |                   |                |                 |                 |
|  | 301  | Social Security                             | 20660          | 39800          | 34800             | 40700          | 42000           | 43200           |
|  |      | <b>Total</b>                                | <b>20660</b>   | <b>39800</b>   | <b>34800</b>      | <b>40700</b>   | <b>42000</b>    | <b>43200</b>    |
| 28   |      | Other expenditures                          |                |                |                   |                |                 |                 |
| 2821   |      | Other current expenses                      |                |                |                   |                |                 |                 |
|  | 303  | Scientific Scholarships and Training Course | 6521           | 6000           | 6000              | 4000           | 6000            | 6000            |
|  |      | <b>Total</b>                                | <b>6521</b>    | <b>6000</b>    | <b>6000</b>       | <b>4000</b>    | <b>6000</b>     | <b>6000</b>     |
|  |      | <b>Total of Activity</b>                    | <b>725612</b>  | <b>832000</b>  | <b>827000</b>     | <b>849300</b>  | <b>861200</b>   | <b>873000</b>   |
|  |      | <b>Total of Program</b>                     | <b>725612</b>  | <b>832000</b>  | <b>827000</b>     | <b>849300</b>  | <b>861200</b>   | <b>873000</b>   |
| Program : 2820 - Following Up and Monitoring Trade Markets                               |      |   |                |                |                   |                |                 |                 |
| Activity : 601 - Markets control and follow up   |      |   |                |                |                   |                |                 |                 |
| Group  | Item | Description                                 | Actual 2010    | Estimated 2011 | Re-estimated 2011 | Estimated 2012 | Indicative 2013 | Indicative 2014 |
| 21   |      | Compensations of Employees                  |                |                |                   |                |                 |                 |
| 2111   |      | Salaries, Wages and allowances              |                |                |                   |                |                 |                 |
|  | 101  | Classified Employees' Salaries              | 17000          | 18000          | 18000             | 17600          | 18000           | 18700           |
|  | 102  | Permanent Unclassified Employees' Salarie   | 72486          | 75000          | 75000             | 99200          | 102400          | 125500          |
|  | 103  | Contract Employees' Salaries                | 0              | 5000           | 5000              | 4500           | 4700            | 4800            |
|  | 105  | Personal Cost of Living Allowance           | 139967         | 171600         | 171600            | 174000         | 175000          | 175000          |
|  | 106  | Family Allowance                            | 10000          | 10000          | 10000             | 10000          | 10300           | 10600           |
|  | 107  | Basic Allowance                             | 21989          | 23000          | 23000             | 21800          | 22400           | 23000           |
|  | 110  | Overtime Allowance                          | 677            | 1500           | 1500              | 1500           | 1500            | 1500            |
|  | 111  | Additional Allowance                        | 29000          | 30000          | 30000             | 31800          | 32800           | 33700           |
|  | 113  | Transportation Allowance                    | 14548          | 17500          | 17500             | 16500          | 17000           | 17500           |
|  | 114  | Transport Allowance                         | 5678           | 6500           | 6500              | 6000           | 6200            | 6400            |
|  | 116  | Employees' bonuses                          | 12999          | 14000          | 14000             | 15000          | 15000           | 15000           |
|  |      | <b>Total</b>                                | <b>324344</b>  | <b>372100</b>  | <b>372100</b>     | <b>397900</b>  | <b>405300</b>   | <b>431700</b>   |
| 2121   |      | Social Security Contributions               |                |                |                   |                |                 |                 |
|  | 301  | Social Security                             | 19500          | 24200          | 24200             | 12600          | 13000           | 13400           |
|  |      | <b>Total</b>                                | <b>19500</b>   | <b>24200</b>   | <b>24200</b>      | <b>12600</b>   | <b>13000</b>    | <b>13400</b>    |
| 28   |      | Other expenditures                          |                |                |                   |                |                 |                 |
| 2821   |      | Other current expenses                      |                |                |                   |                |                 |                 |
|  | 303  | Scientific Scholarships and Training Course | 2100           | 5000           | 5000              | 4000           | 5000            | 5000            |
|  |      | <b>Total</b>                                | <b>2100</b>    | <b>5000</b>    | <b>5000</b>       | <b>4000</b>    | <b>5000</b>     | <b>5000</b>     |
|  |      | <b>Total of Activity</b>                    | <b>345944</b>  | <b>401300</b>  | <b>401300</b>     | <b>414500</b>  | <b>423300</b>   | <b>450100</b>   |
|  |      | <b>Total of Program</b>                     | <b>345944</b>  | <b>401300</b>  | <b>401300</b>     | <b>414500</b>  | <b>423300</b>   | <b>450100</b>   |
|  |      | <b>Total of Chapter</b>                     | <b>7325012</b> | <b>7826000</b> | <b>7801800</b>    | <b>8177000</b> | <b>8314000</b>  | <b>8574000</b>  |

# Capital Expenditures According to Program and Projects For the years 2010 - 2014

Chapter : 1601 Ministry of Industry and Trade

( In JDs )

| Program 2801 Administration and Support Services |      |   |             |                |                   |                |                 |                 |
|--|------|---|-------------|----------------|-------------------|----------------|-----------------|-----------------|
| Project  |      | 001 Administration Project              |             |                |                   |                |                 |                 |
| Fund Source                                      |      | 102001 Capital (Treasury)               |             |                |                   |                |                 |                 |
| Group  | item | Description                             | Actual 2010 | Estimated 2011 | Re-Estimated 2011 | Estimated 2012 | Indicative 2013 | Indicative 2014 |
| 22   |      | Use of Goods and Services               |             |                |                   |                |                 |                 |
| 2211   |      | Use of Goods and Services               |             |                |                   |                |                 |                 |
|  | 510  | Buildings and facilities repair and mai |             |                |                   |                |                 |                 |
|  | 008  | Miscellaneous buildings maintena        | 59673       | 250000         | 190000            | 101000         | 140000          | 115000          |
|  |      | Total of Item                           | 59673       | 250000         | 190000            | 101000         | 140000          | 115000          |
|  | 512  | Operating and maintenance Expense       |             |                |                   |                |                 |                 |
|  | 014  | Archiving and Documentation             | 39476       | 40000          | 40000             | 90000          | 85000           | 65000           |
|  | 018  | Computer networks Maintenan             | 24519       | 110000         | 110000            | 75000          | 100000          | 100000          |
|  | 036  | Computerization and automation o        | 95887       | 120000         | 120000            | 80000          | 120000          | 120000          |
|  | 999  | n.e.c                                   | 0           | 40000          | 0                 | 0              | 0               | 0               |
|  |      | Total of Item                           | 159882      | 310000         | 270000            | 245000         | 305000          | 285000          |
| 26   |      | Subsidy/Grants                          |             |                |                   |                |                 |                 |
| 2632   |      | Subsidy to other public gov. units/cap  |             |                |                   |                |                 |                 |
|  | 509  | Subsidy to other public gov. units/cap  |             |                |                   |                |                 |                 |
|  | 112  | Jordan's contribution in Private S      | 0           | 710000         | 710000            | 946700         | 946700          | 946700          |
|  |      | Total of Item                           | 0           | 710000         | 710000            | 946700         | 946700          | 946700          |
| 31   |      | Non-financial Assets                    |             |                |                   |                |                 |                 |
| 3112   |      | Machinery and Equipment                 |             |                |                   |                |                 |                 |
|  | 505  | Equipments, Machines and Apparatu       |             |                |                   |                |                 |                 |
|  | 001  | Computers and accessories               | 0           | 120000         | 120000            | 93300          | 81300           | 51300           |
|  | 003  | Office apparatus and equipment          | 3572        | 25000          | 10000             | 5000           | 10000           | 5000            |
|  | 999  | n.e.c                                   | 0           | 50000          | 0                 | 0              | 0               | 0               |
|  |      | Total of Item                           | 3572        | 195000         | 130000            | 98300          | 91300           | 56300           |
|  |      | Total of Project / Treasury             | 223127      | 1465000        | 1300000           | 1391000        | 1483000         | 1403000         |
| Project  |      | 002 E-government Project                |             |                |                   |                |                 |                 |
| Fund Source                                      |      | 102001 Capital (Treasury)               |             |                |                   |                |                 |                 |
| Group  | item | Description                             | Actual 2010 | Estimated 2011 | Re-Estimated 2011 | Estimated 2012 | Indicative 2013 | Indicative 2014 |
| 22   |      | Use of Goods and Services               |             |                |                   |                |                 |                 |
| 2211   |      | Use of Goods and Services               |             |                |                   |                |                 |                 |
|  | 512  | Operating and maintenance Expense       |             |                |                   |                |                 |                 |
|  | 008  | Training expenses                       | 0           | 0              | 0                 | 10000          | 10000           | 10000           |
|  | 015  | Operating systems and software          | 32101       | 180000         | 100000            | 0              | 0               | 0               |
|  | 036  | Computerization and automation o        | 0           | 0              | 0                 | 50000          | 75000           | 65000           |
|  |      | Total of Item                           | 32101       | 180000         | 100000            | 60000          | 85000           | 75000           |
| 31   |      | Non-financial Assets                    |             |                |                   |                |                 |                 |
| 3112   |      | Machinery and Equipment                 |             |                |                   |                |                 |                 |
|  | 505  | Equipments, Machines and Apparatu       |             |                |                   |                |                 |                 |
|  | 001  | Computers and accessories               | 0           | 0              | 0                 | 25000          | 15000           | 15000           |
|  |      | Total of Item                           | 0           | 0              | 0                 | 25000          | 15000           | 15000           |
|  |      | Total of Project / Treasury             | 32101       | 180000         | 100000            | 85000          | 100000          | 90000           |
|  |      | Total of Program                        | 255228      | 1645000        | 1400000           | 1476000        | 1583000         | 1493000         |

# Capital Expenditures According to Program and Projects For the years 2010 - 2014

Chapter : 1601 Ministry of Industry and Trade

( In JDs )

| Program 2805 Organizing and Promoting Economic and Commercial Development |      |   |             |                |                   |                |                 |                 |
|---|------|---|-------------|----------------|-------------------|----------------|-----------------|-----------------|
| Project   |      | 001 Organizing and Promoting Economic and Commercial Development Program Administ |             |                |                   |                |                 |                 |
| Fund Source   |      | 102001 Capital (Treasury)   |             |                |                   |                |                 |                 |
| Group   | item | Description   | Actual 2010 | Estimated 2011 | Re-Estimated 2011 | Estimated 2012 | Indicative 2013 | Indicative 2014 |
| 21  |      | Compensations of Employees  |             |                |                   |                |                 |                 |
| 2111  |      | Salaries, Wages and allowances  |             |                |                   |                |                 |                 |
|   | 502  | Wages   |             |                |                   |                |                 |                 |
|   | 004  | Bonuses   | 0           | 20000          | 20000             | 20000          | 20000           | 20000           |
|   |      | Total of Item   | 0           | 20000          | 20000             | 20000          | 20000           | 20000           |
|   |      | Total of Project / Treasury   | 0           | 20000          | 20000             | 20000          | 20000           | 20000           |
| Project   |      | 004 Supporting the projects of Jordan Investment Board                            |             |                |                   |                |                 |                 |
| Fund Source   |      | 102001 Capital (Treasury)   |             |                |                   |                |                 |                 |
| Group   | item | Description   | Actual 2010 | Estimated 2011 | Re-Estimated 2011 | Estimated 2012 | Indicative 2013 | Indicative 2014 |
| 26  |      | Subsidy/Grants  |             |                |                   |                |                 |                 |
| 2632  |      | Subsidy to other public gov. units/cap  |             |                |                   |                |                 |                 |
|   | 509  | Subsidy to other public gov. units/cap  |             |                |                   |                |                 |                 |
|   | 007  | Jordan Investment Board   | 1800000     | 1080000        | 1080000           | 1190000        | 1450000         | 1500000         |
|   |      | Total of Item   | 1800000     | 1080000        | 1080000           | 1190000        | 1450000         | 1500000         |
|   |      | Total of Project / Treasury   | 1800000     | 1080000        | 1080000           | 1190000        | 1450000         | 1500000         |
| Project   |      | 005 Supporting the projects of Jordanian Enterprise Development Corporation       |             |                |                   |                |                 |                 |
| Fund Source   |      | 102001 Capital (Treasury)   |             |                |                   |                |                 |                 |
| Group   | item | Description   | Actual 2010 | Estimated 2011 | Re-Estimated 2011 | Estimated 2012 | Indicative 2013 | Indicative 2014 |
| 26  |      | Subsidy/Grants  |             |                |                   |                |                 |                 |
| 2632  |      | Subsidy to other public gov. units/cap  |             |                |                   |                |                 |                 |
|   | 509  | Subsidy to other public gov. units/cap  |             |                |                   |                |                 |                 |
|   | 018  | Jordan Enterprise Development C   | 5000000     | 2100000        | 2100000           | 1955000        | 2000000         | 2000000         |
|   |      | Total of Item   | 5000000     | 2100000        | 2100000           | 1955000        | 2000000         | 2000000         |
|   |      | Total of Project / Treasury   | 5000000     | 2100000        | 2100000           | 1955000        | 2000000         | 2000000         |
| Project   |      | 006 National Strategy for E-Commerce  |             |                |                   |                |                 |                 |
| Fund Source   |      | 102001 Capital (Treasury)   |             |                |                   |                |                 |                 |
| Group   | item | Description   | Actual 2010 | Estimated 2011 | Re-Estimated 2011 | Estimated 2012 | Indicative 2013 | Indicative 2014 |
| 22  |      | Use of Goods and Services   |             |                |                   |                |                 |                 |
| 2211  |      | Use of Goods and Services   |             |                |                   |                |                 |                 |
|   | 512  | Operating and maintenance Expense   |             |                |                   |                |                 |                 |
|   | 008  | Training expenses   | 10968       | 30000          | 10000             | 10000          | 20000           | 0               |
|   | 017  | Promotion, advertising and PR   | 0           | 119600         | 52000             | 15000          | 50000           | 50000           |
|   | 036  | Computerization and automation o  | 250000      | 53000          | 53000             | 50000          | 77000           | 50000           |
|   |      | Total of Item   | 260968      | 202600         | 115000            | 75000          | 147000          | 100000          |
| 28  |      | Other expenditures  |             |                |                   |                |                 |                 |
| 2822  |      | Other Capital expenditures  |             |                |                   |                |                 |                 |
|   | 504  | Studies, Researches and Consultation  |             |                |                   |                |                 |                 |
|   | 036  | Different studies   | 0           | 20000          | 5000              | 0              | 0               | 0               |
|   |      | Total of Item   | 0           | 20000          | 5000              | 0              | 0               | 0               |
|   |      | Total of Project / Treasury   | 260968      | 222600         | 120000            | 75000          | 147000          | 100000          |

# Capital Expenditures According to Program and Projects For the years 2010 - 2014

Chapter : 1601 Ministry of Industry and Trade

( In JDs )

| Program 2805 Organizing and Promoting Economic and Commercial Development |      |   |             |                |                   |                |                 |                 |
|---|------|---|-------------|----------------|-------------------|----------------|-----------------|-----------------|
| Project   |      | 007 Implementing the industrial policy document |             |                |                   |                |                 |                 |
| Fund Source   |      | 102001 Capital (Treasury)                       |             |                |                   |                |                 |                 |
| Group   | item | Description                                     | Actual 2010 | Estimated 2011 | Re-Estimated 2011 | Estimated 2012 | Indicative 2013 | Indicative 2014 |
| 22  |      | Use of Goods and Services                       |             |                |                   |                |                 |                 |
| 2211  |      | Use of Goods and Services                       |             |                |                   |                |                 |                 |
|   | 512  | Operating and maintenance Expense               |             |                |                   |                |                 |                 |
|   | 015  | Operating systems and software                  | 0           | 40000          | 40000             | 0              | 0               | 0               |
|   | 032  | Conventions Celebrations and Wo                 | 0           | 34400          | 34400             | 0              | 0               | 0               |
|   | 065  | Different activities                            | 0           | 0              | 0                 | 1445000        | 2099000         | 2102000         |
|   | 999  | n.e.c   | 0           | 2835600        | 925600            | 0              | 0               | 0               |
|   |      | Total of Item                                   | 0           | 2910000        | 1000000           | 1445000        | 2099000         | 2102000         |
|   |      | Total of Project / Treasury                     | 0           | 2910000        | 1000000           | 1445000        | 2099000         | 2102000         |
| Project   |      | 009 Executing foreign trade strategy            |             |                |                   |                |                 |                 |
| Fund Source   |      | 102001 Capital (Treasury)                       |             |                |                   |                |                 |                 |
| Group   | item | Description                                     | Actual 2010 | Estimated 2011 | Re-Estimated 2011 | Estimated 2012 | Indicative 2013 | Indicative 2014 |
| 22  |      | Use of Goods and Services                       |             |                |                   |                |                 |                 |
| 2211  |      | Use of Goods and Services                       |             |                |                   |                |                 |                 |
|   | 512  | Operating and maintenance Expense               |             |                |                   |                |                 |                 |
|   | 032  | Conventions Celebrations and Wo                 | 0           | 0              | 0                 | 15000          | 28000           | 10000           |
|   | 999  | n.e.c   | 0           | 20000          | 10000             | 0              | 0               | 0               |
|   |      | Total of Item                                   | 0           | 20000          | 10000             | 15000          | 28000           | 10000           |
| 28  |      | Other expenditures                              |             |                |                   |                |                 |                 |
| 2822  |      | Other Capital expenditures                      |             |                |                   |                |                 |                 |
|   | 504  | Studies, Researches and Consultation            |             |                |                   |                |                 |                 |
|   | 012  | Economic Studies                                | 0           | 35000          | 22000             | 45000          | 50000           | 50000           |
|   |      | Total of Item                                   | 0           | 35000          | 22000             | 45000          | 50000           | 50000           |
|   |      | Total of Project / Treasury                     | 0           | 55000          | 32000             | 60000          | 78000           | 60000           |
| Project   |      | 011 Protecting the national production          |             |                |                   |                |                 |                 |
| Fund Source   |      | 102001 Capital (Treasury)                       |             |                |                   |                |                 |                 |
| Group   | item | Description                                     | Actual 2010 | Estimated 2011 | Re-Estimated 2011 | Estimated 2012 | Indicative 2013 | Indicative 2014 |
| 22  |      | Use of Goods and Services                       |             |                |                   |                |                 |                 |
| 2211  |      | Use of Goods and Services                       |             |                |                   |                |                 |                 |
|   | 512  | Operating and maintenance Expense               |             |                |                   |                |                 |                 |
|   | 008  | Training expenses                               | 0           | 0              | 0                 | 10000          | 20000           | 10000           |
|   | 017  | Promotion, advertising and PR                   | 0           | 0              | 0                 | 7000           | 20000           | 15000           |
|   |      | Total of Item                                   | 0           | 0              | 0                 | 17000          | 40000           | 25000           |
| 28  |      | Other expenditures                              |             |                |                   |                |                 |                 |
| 2822  |      | Other Capital expenditures                      |             |                |                   |                |                 |                 |
|   | 504  | Studies, Researches and Consultation            |             |                |                   |                |                 |                 |
|   | 036  | Different studies                               | 0           | 0              | 0                 | 58000          | 70000           | 50000           |
|   |      | Total of Item                                   | 0           | 0              | 0                 | 58000          | 70000           | 50000           |
|   |      | Total of Project / Treasury                     | 0           | 0              | 0                 | 75000          | 110000          | 75000           |
|   |      | Total of Program                                | 7060968     | 6387600        | 4352000           | 4820000        | 5904000         | 5857000         |

# Capital Expenditures According to Program and Projects For the years 2010 - 2014

Chapter : 1601 Ministry of Industry and Trade

( In JDs )

| Program 2810 Trade and Strategic Inventory |      |   |             |                |                   |                |                 |                 |
|--|------|---|-------------|----------------|-------------------|----------------|-----------------|-----------------|
| Project                                    |      | 002 Reconciling trade registry conditions           |             |                |                   |                |                 |                 |
| Fund Source                                |      | 102001 Capital (Treasury)                           |             |                |                   |                |                 |                 |
| Group                                      | item | Description   | Actual 2010 | Estimated 2011 | Re-Estimated 2011 | Estimated 2012 | Indicative 2013 | Indicative 2014 |
| 22   |      | Use of Goods and Services                           |             |                |                   |                |                 |                 |
| 2211                                       |      | Use of Goods and Services                           |             |                |                   |                |                 |                 |
|  | 512  | Operating and maintenance Expense                   |             |                |                   |                |                 |                 |
|  | 017  | Promotion, advertising and PR                       | 0           | 0              | 0                 | 30000          | 30000           | 30000           |
|  | 999  | n.e.c   | 22580       | 40000          | 40000             | 20000          | 20000           | 20000           |
|  |      | Total of Item                                       | 22580       | 40000          | 40000             | 50000          | 50000           | 50000           |
| 28   |      | Other expenditures                                  |             |                |                   |                |                 |                 |
| 2822                                       |      | Other Capital expenditures                          |             |                |                   |                |                 |                 |
|  | 504  | Studies, Researches and Consultation                |             |                |                   |                |                 |                 |
|  | 024  | Market Studies                                      | 0           | 10000          | 10000             | 10000          | 10000           | 0               |
|  |      | Total of Item                                       | 0           | 10000          | 10000             | 10000          | 10000           | 0               |
|  |      | Total of Project / Treasury                         | 22580       | 50000          | 50000             | 60000          | 60000           | 50000           |
| Project                                    |      | 003 Early alarm of the Kingdom's increasing imports |             |                |                   |                |                 |                 |
| Fund Source                                |      | 102001 Capital (Treasury)                           |             |                |                   |                |                 |                 |
| Group                                      | item | Description   | Actual 2010 | Estimated 2011 | Re-Estimated 2011 | Estimated 2012 | Indicative 2013 | Indicative 2014 |
| 22   |      | Use of Goods and Services                           |             |                |                   |                |                 |                 |
| 2211                                       |      | Use of Goods and Services                           |             |                |                   |                |                 |                 |
|  | 512  | Operating and maintenance Expense                   |             |                |                   |                |                 |                 |
|  | 999  | n.e.c   | 0           | 1000           | 1000              | 25000          | 15000           | 15000           |
|  |      | Total of Item                                       | 0           | 1000           | 1000              | 25000          | 15000           | 15000           |
|  |      | Total of Project / Treasury                         | 0           | 1000           | 1000              | 25000          | 15000           | 15000           |
|  |      | Total of Program                                    | 22580       | 51000          | 51000             | 85000          | 75000           | 65000           |

Capital Expenditures According to Program and Projects For the years 2010 - 2014

Chapter : 1601 Ministry of Industry and Trade

( In JDs )

| Program 2815 Industrial and Trade Sector Competitiveness |      |  |             |                |                   |                |                 |                 |
|--|------|--|-------------|----------------|-------------------|----------------|-----------------|-----------------|
| Project  |      | 001 Spreading Competition Culture  |             |                |                   |                |                 |                 |
| Fund Source  |      | 102001 Capital (Treasury)  |             |                |                   |                |                 |                 |
| Group  | item | Description  | Actual 2010 | Estimated 2011 | Re-Estimated 2011 | Estimated 2012 | Indicative 2013 | Indicative 2014 |
| 22   |      | Use of Goods and Services  |             |                |                   |                |                 |                 |
| 2211   |      | Use of Goods and Services  |             |                |                   |                |                 |                 |
|  | 512  | Operating and maintenance Expense  |             |                |                   |                |                 |                 |
|  | 008  | Training expenses  | 30240       | 20000          | 20000             | 20000          | 40000           | 40000           |
|  | 017  | Promotion, advertising and PR  | 0           | 35000          | 35000             | 20000          | 20000           | 20000           |
|  | 032  | Conventions Celebrations and Wo  | 2632        | 15000          | 15000             | 20000          | 20000           | 20000           |
|  | 999  | n.e.c  | 5850        | 0              | 0                 | 0              | 0               | 0               |
|  |      | Total of Item  | 38722       | 70000          | 70000             | 60000          | 80000           | 80000           |
| 28   |      | Other expenditures   |             |                |                   |                |                 |                 |
| 2822   |      | Other Capital expenditures   |             |                |                   |                |                 |                 |
|  | 504  | Studies, Researches and Consultation   |             |                |                   |                |                 |                 |
|  | 036  | Different studies  | 0           | 0              | 0                 | 40000          | 60000           | 60000           |
|  |      | Total of Item  | 0           | 0              | 0                 | 40000          | 60000           | 60000           |
|  |      | Total of Project / Treasury  | 38722       | 70000          | 70000             | 100000         | 140000          | 140000          |
| Project  |      | 003 Promotion and awareness of the significance of industrial ownership rights |             |                |                   |                |                 |                 |
| Fund Source  |      | 102001 Capital (Treasury)  |             |                |                   |                |                 |                 |
| Group  | item | Description  | Actual 2010 | Estimated 2011 | Re-Estimated 2011 | Estimated 2012 | Indicative 2013 | Indicative 2014 |
| 22   |      | Use of Goods and Services  |             |                |                   |                |                 |                 |
| 2211   |      | Use of Goods and Services  |             |                |                   |                |                 |                 |
|  | 512  | Operating and maintenance Expense  |             |                |                   |                |                 |                 |
|  | 017  | Promotion, advertising and PR  | 0           | 0              | 0                 | 15000          | 20000           | 20000           |
|  | 999  | n.e.c  | 0           | 0              | 0                 | 5000           | 15000           | 15000           |
|  |      | Total of Item  | 0           | 0              | 0                 | 20000          | 35000           | 35000           |
|  |      | Total of Project / Treasury  | 0           | 0              | 0                 | 20000          | 35000           | 35000           |
|  |      | Total of Program   | 38722       | 70000          | 70000             | 120000         | 175000          | 175000          |

# Capital Expenditures According to Program and Projects For the years 2010 - 2014

Chapter : 1601 Ministry of Industry and Trade

( In JDs )

| Program 2820 Following Up and Monitoring Trade Markets |      |  |             |                |                   |                |                 |                 |
|--|------|--|-------------|----------------|-------------------|----------------|-----------------|-----------------|
| Project  |      | 001 Following Up and Monitoring Trade Markets Program Administration Project |             |                |                   |                |                 |                 |
| Fund Source  |      | 102001 Capital (Treasury)  |             |                |                   |                |                 |                 |
| Group  | item | Description  | Actual 2010 | Estimated 2011 | Re-Estimated 2011 | Estimated 2012 | Indicative 2013 | Indicative 2014 |
| 21   |      | Compensations of Employees   |             |                |                   |                |                 |                 |
| 2111   |      | Salaries, Wages and allowances   |             |                |                   |                |                 |                 |
|  | 501  | Salaries   |             |                |                   |                |                 |                 |
|  | 004  | Bonuses  | 0           | 0              | 0                 | 25000          | 35000           | 35000           |
|  |      | Total of Item  | 0           | 0              | 0                 | 25000          | 35000           | 35000           |
| 22   |      | Use of Goods and Services  |             |                |                   |                |                 |                 |
| 2211   |      | Use of Goods and Services  |             |                |                   |                |                 |                 |
|  | 512  | Operating and maintenance Expense  |             |                |                   |                |                 |                 |
|  | 999  | n.e.c  | 0           | 40000          | 40000             | 15000          | 15000           | 15000           |
|  |      | Total of Item  | 0           | 40000          | 40000             | 15000          | 15000           | 15000           |
|  |      | Total of Project / Treasury  | 0           | 40000          | 40000             | 40000          | 50000           | 50000           |
|  |      | Total of Program   | 0           | 40000          | 40000             | 40000          | 50000           | 50000           |
|  |      | Total of Chapter   | 7377498     | 8193600        | 5913000           | 6541000        | 7787000         | 7640000         |